

Installing the USB to Parallel adapter

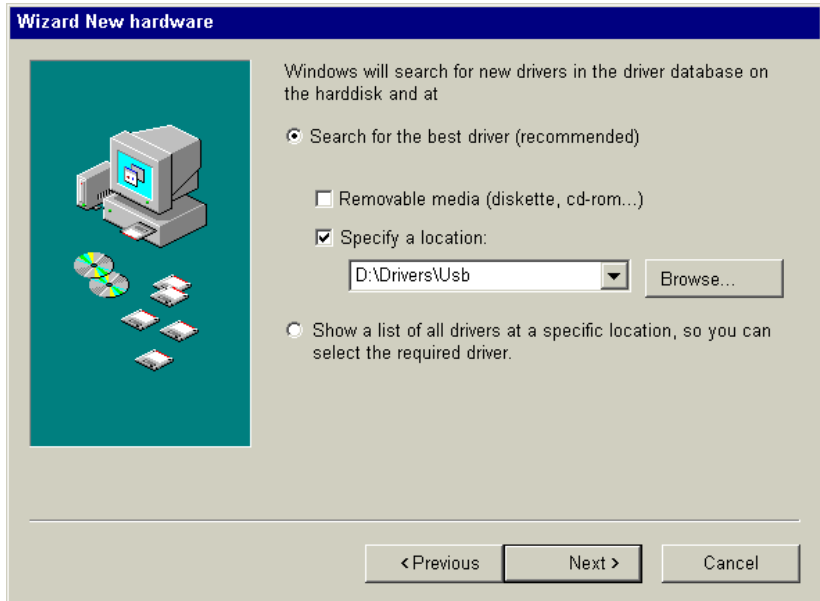
When the TiePie USB to Parallel adapter is connected to a USB port of the computer, Windows will report new hardware.

The first time this is done, Windows will request for the location where the drivers can be found.



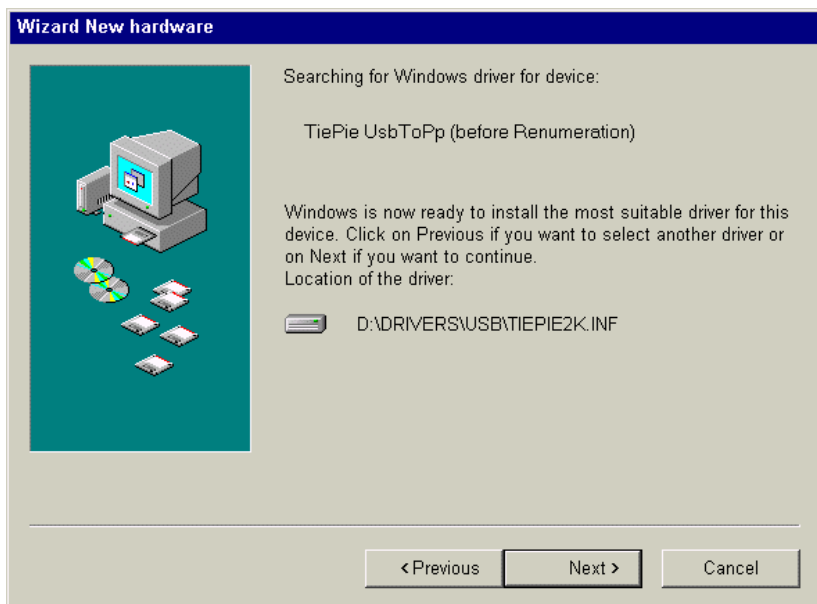
Insert the TiePie software CD in the CDROM drive of your computer. Select **Specify the location of the drivers** and click **Next >**.

Now a location for the drivers has to be specified:



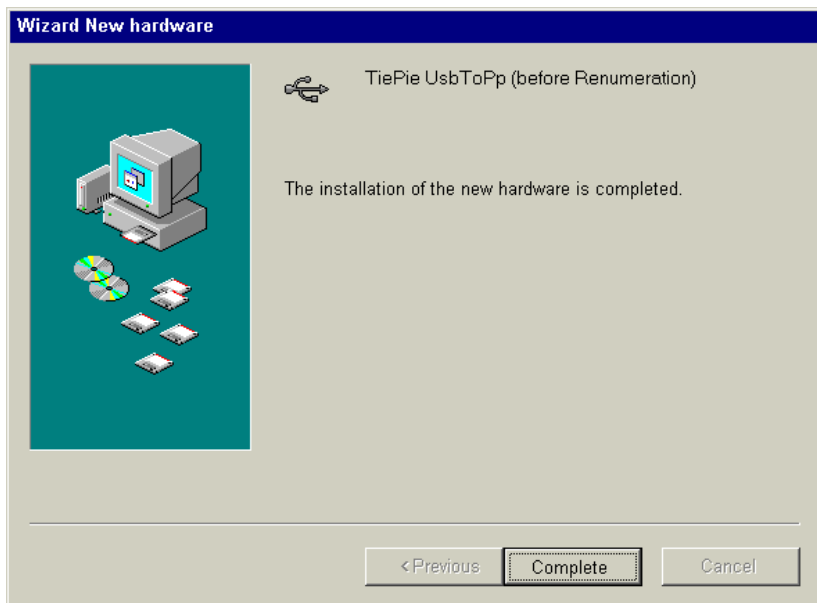
Select **Search for the best driver** and check **Specify a location**. Use the **Browse** button to browse to the folder Drivers\Usb on the TiePie software CD. Then click **Next >**.

Windows will now report that it has found the TiePie UsbToPp device:



Click **Next >** to install this driver.

Windows will now install the drivers for the TiePie USB to Parallel adapter. When the installation is complete, Windows will report:



The TiePie USB to Parallel adapter is now ready to use.

When the USB to Parallel adapter is disconnected, the required drivers will be removed from the memory of the computer.

The next time the USB interface is connected, the required drivers will be loaded again. The CD is no longer required for that.