

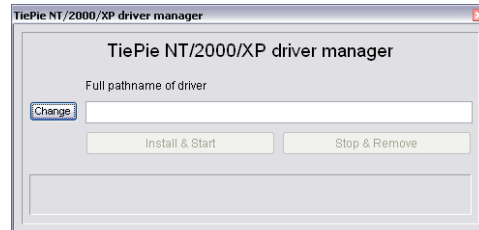
TiePie measurement software and Windows NT

To be able to use the TiePie software for an LPT or ISA instrument on a Windows NT, 2000, XP or Vista 32 computer, a special driver is required.

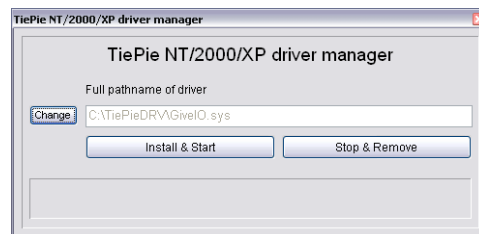
Installation of the driver

The driver is available on the product CD or can be downloaded from the TiePie engineering website www.tiepie.nl. To install the driver, follow the instructions.

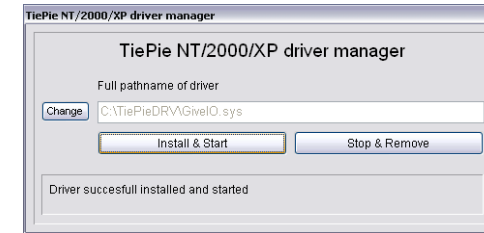
1. To be able to install the driver, you need to be logged on as Administrator. If you are not, log off and log on as Administrator.
2. Create a directory on the hard disk of the computer and name it e.g. TiePieDrv.
3. Copy the files from the zip file to the directory on the hard disk.
4. Start the **InstallDrv** program in the TiePieDrv directory.



5. The first time this program is executed, the input box is empty. Press the **Change** button and select the file **GivelO.sys** from the current directory. Then close the file selection dialog.



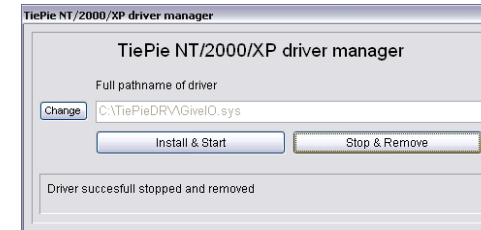
6. Now press the **Install & Start** button. The driver is now being installed in Windows.



7. Shut down and restart the computer and log on in the way you normally do. The driver is registered in the kernel and will be loaded each time Windows is started.
8. The TiePie measurement software will now function in Windows.

Removing the driver

To remove the driver, log on as Administrator, start the InstallDrv program and press the **Stop & Remove** button.



Then restart the computer and log on as you normally do.