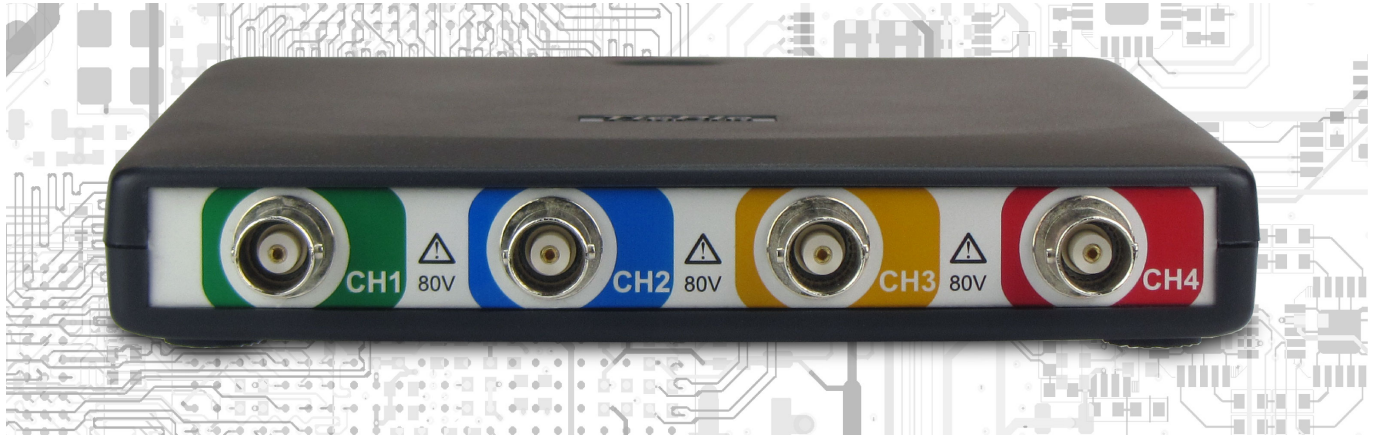
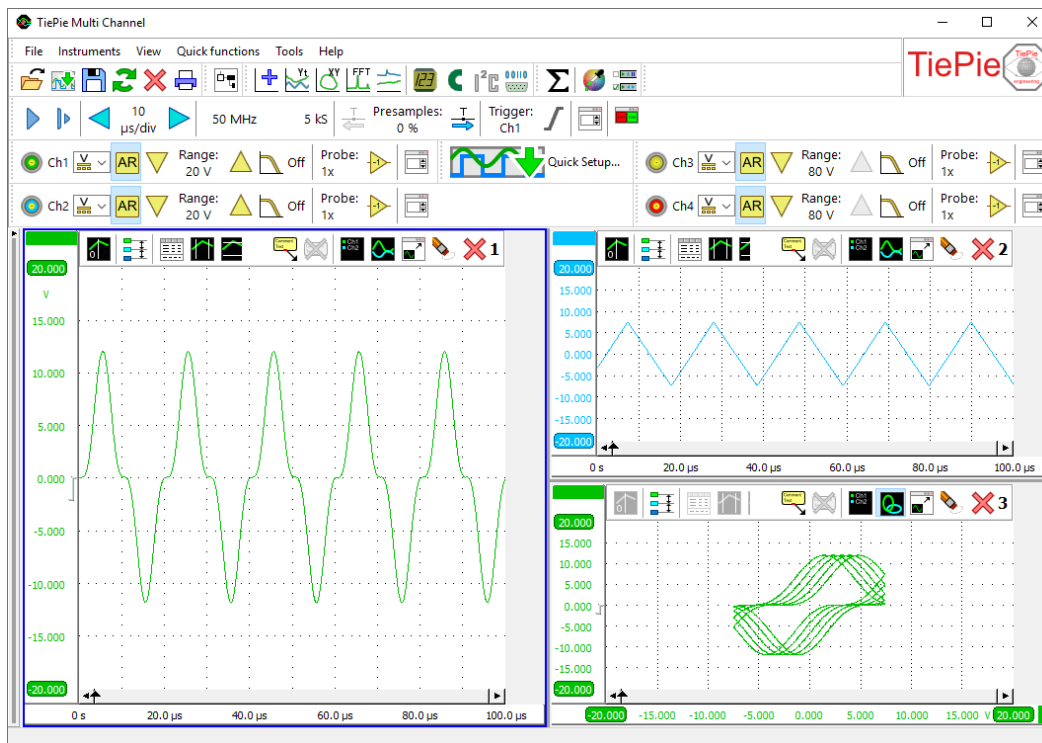


Handyscope HS6

250 MHz bandwidth, 1 GS/s, 14 bit USB 3.0 PC oscilloscope



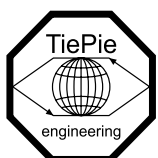
The high resolution USB oscilloscope with the lowest noise and high sensitivity with 4 input channels and an amazing 256 million point record length that can be filled with a sample rate of 1GSa/s. This is the most powerful, portable and versatile USB 3.0 PC oscilloscope, EMI pre compliance tester, high resolution multimeter and more..., incorporating innovative technology such as SureConnect and CMI interfacing and a SuperSpeed USB 3.0 connection.



Step into the Next Generation of High Performance USB 3.0 PC oscilloscopes.

The best way to experience that superiority of the Handyscope HS6 series USB 3.0 PC oscilloscopes is to use one.

See
www.tiepie.com/HS6



TiePie engineering



Handyscope HS6, the USB 3.0 PC oscilloscope packed with technology

Key facts of this high sensitivity low noise best in class USB 3.0 oscilloscope:

- 1 GSamples per second sample rate USB 3.0 oscilloscope
- 14-16 bit High Resolution, 256 times more amplitude resolution than an 8 bit oscilloscope
- Lowest noise USB oscilloscope in the market
- DC Accuracy of 0.25 % and 0.1 % typical
- SureConnect connection test on each channel
- Extremely accurate EMI pre compliance tester with special EMI probe set
- CMI interface to combine multiple instruments for fully synchronized measuring
- Up to 250 MHz analog bandwidth
- Switchable hardware-based bandwidth limiter of 150MHz, 100MHz and 50MHz
- Highly accurate 1 ppm timebase
- Super zoom up to 256 Million samples deep buffer memory
- Spectrum analyzer with 32 million bins
- High Performance Digital Multimeter (DMM)
- Very fast 200 MSamples per second USB streaming Data logger
- Protocol analyzer
- Quick Setup fast to work with all types of measurements
- I/O blocks to build your own measurement
- An API and SDK to build your own software
- SuperSpeed USB 3.0 connection
- Free software and firmware updates
- 2 years warranty, 5 years optional

The Handyscope HS6 provides the best that is available in industry, for a limited budget. The flexibility and quality that the Handyscope HS6 offers is unparalleled by any other oscilloscope in its class.

Models

The Handyscope HS6 is available in three different models with an extended memory option (XM), with EMI option (E) and with optional SureConnect connection test and resistance measurement (S).

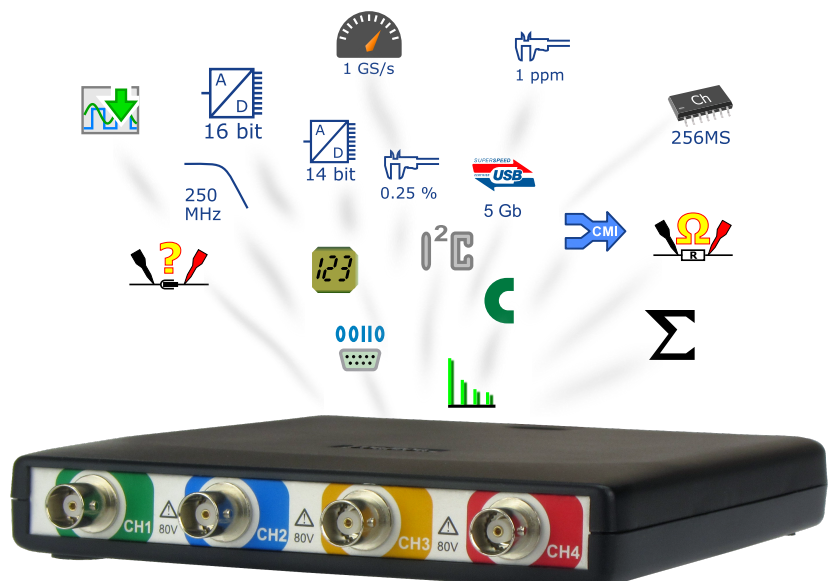
Handyscope HS6 model	1000	500	200
Maximum sampling rate	1 GSa/s	500 MSa/s	200 MSa/s
Maximum streaming rate	200 MSa/s	100 MSa/s	40 MSa/s
Maximum record length	standard model	1 Mpts	1 Mpts
	XM option	256 Mpts	256 Mpts

The right choice

The Handyscope HS6 series USB 3.0 PC oscilloscope, fully packed with technology for all your advanced measurements now and in the future.

This small, light and portable USB oscilloscope captures and displays significantly more signal to solve your measurement problem. Because of this, the Handyscope HS6 series is an ideal choice for demanding measurements.

Expand your channels with the CMI interface and build a comprehensive measuring system in seconds with a lot more than 4 channels and also add AWG generators such as the Handyscope HS5.



SureConnect connection test on each channel



TiePie engineering is the first oscilloscope manufacturer to implement **SureConnect** technology. While measuring, the revolutionary **SureConnect** technology checks in real time whether a test probe is in physical and electrical contact with the test subject.

Assuring a good connection of a probe with a test subject may not always be easy. The subject under measurement may be dirty, oxidized or an (invisible) protective layer may be present. Or, the test subject may be hidden, making visible contact confirmation impossible. Also, capacitive coupling between test probe and test subject can result in measuring a distorted version of the actual signal, wrongly suggesting a connection. Simply activate the **SureConnect** connection test and you know whether there is contact or not.



SureConnect: no more doubt whether your probe doesn't make contact or there really is no signal.

See a demonstration of **SureConnect** at <https://youtu.be/MinFpSFvtIY>

Resistance measurement on each channel



Many sensors are based on variable resistors. Use your Handyscope HS6 in the resistance setting to test them, no more need to take a separate ohm meter. Resistance values can be displayed as a number, but it is also possible to display the resistance variation in time, in a graph: an **Ohm scope**.

The Ohm scope uses the same inputs as the oscilloscope. Changing the measure leads is not required. The advanced protection against over voltage ensures that the Ohm scope withstands high voltages.

A typical application is to create resistance graphs of special resistors like NTCs and PTCs. Use e.g. channel 1 to measure the resistance of the PTC and channel 2 to measure the temperature. An XY plot will then show the resistance variation as a function of the temperature.

Advantages of the Ohm scope are:

- Capture fast resistance changes in a graph.
- Detect and locate carbon track defects in a variable resistor.

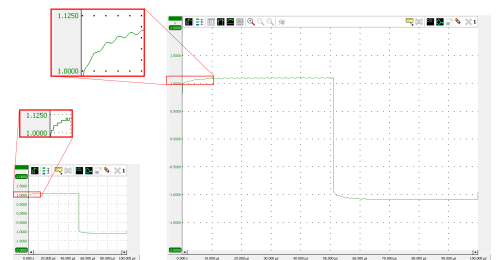
High amplitude resolution, 256 times more than a standard oscilloscope



A standalone oscilloscope usually has a low resolution of 8 or 9 bit, combined with a limited display of just 5.7" or 8.5", displaying the measured signals in their actual resolution. Zooming in will then not reveal more details.

The Handyscope HS6 has high resolutions of 14 and 16 bit, making it a truly high precision oscilloscope. With a high resolution, the original signal is sampled much more accurate, the quantization error is much lower.

To display a signal measured with the Handyscope HS6 high resolution oscilloscope at the same level of detail as the standalone oscilloscope, the display can be 256 times larger. Viewing the signals on a 24" monitor immediately gives a very detailed impression of the signal. The smallest deviations are very well visible and because of the high resolution, it is still possible to zoom in and reveal additional details.



Shown are two displays, both showing a measurement of the same signal. The left display size corresponds to a size comparable to a standalone oscilloscope; at 8 bit resolution, zooming will not reveal more details. The right display corresponds to a maximized window on a standard PC screen; at 14 bit resolution, zooming will still reveal more details.

Highly accurate 1 ppm oscilloscope timebase



The time base accuracy of the Handyscope HS6 is 25 to 100 times better than the comparable instruments of the competition. With a time base accuracy of 1 ppm, frequency and timing can be measured very accurately.

Coupling multiple instruments to a large combined instrument does not affect the time base accuracy, the timing deviation between the coupled instruments is 0 ppm.

Very fast 200 MSamples per second streaming Data logger



200 MS/s

When unlimited deep memory is required, it is possible to stream the measured data directly to disk. The Handyscope HS6 is capable of streaming up to 200 million samples per second, at 12 bit resolution, when measuring 1 channel. When measuring at 16 bit resolution on all four channels, streaming measurements can be performed up to 6.25 MSa/s. Using streaming measuring, difficult problems can be measured easily and traced back and analyzed.

Mega deep memory of up to 256 Mpoints per channel



256MS

When measuring at high sample rates, a long record length is a must, otherwise the acquisition buffer is full before the signal is measured. Where most oscilloscopes have 2.5 kpoints or 100 kpoints memory, the Handyscope HS6 has up to 256 Mpoints memory per channel, depending on the selected resolution and the number of active channels. When measuring at 14 bit resolution and all four channels, the available memory is 32 Mpoints per channel. This gives the user 300 to 10000 times more memory. The advantage of deep memory is that once-only fast phenomena can be measured accurately or complete serial communication signal blocks like CAN Bus signals can be measured all at once.

To the right, a 256 million samples long measurement is shown. The same signal is shown three times in different zooming factors, the bottom graph shows just 256 ns of the total 356 ms, a zoom factor of 1 million. It still provides enough detail for accurate signal analysis.

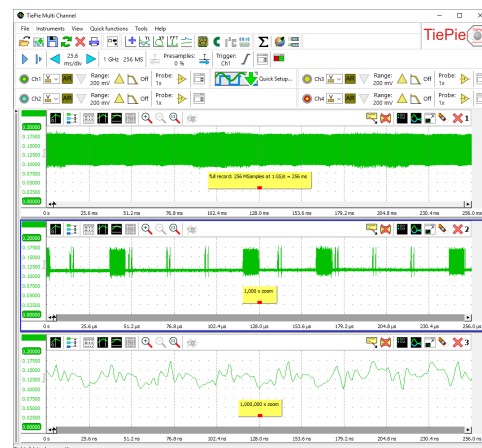
In the USB 3.0 spectrum analyzer, the deep memory gives the advantage that a large dynamic range is created which sets troubleshooting in the frequency domain as a new standard.

Switchable hardware-based bandwidth limiter



BWL

It seems reasonable to assume that more bandwidth is better, but a wider bandwidth gives more noise. To reduce your noise you can switch the bandwidth limiter on. Enabling the bandwidth limit also avoids under sampling. When a lot of noise appears on your signal and triggering becomes unstable, switching the bandwidth limit on will give a stable triggering. The bandwidth limit can be enabled for each channel individually.



The unlimited super zoom feature of the Handyscope HS6 allows to zoom in up to one individual sample, no matter what record length was selected.

Range: 200 mV	Probe: 1x
Range: 200 mV	Probe: 1x
Range: 200 mV	Probe: 1x
Range: 200 mV	Probe: 1x

EMI pre compliance tester



The powerful capabilities of the Handyscope HS6 EMI analyzer give the user the possibility to quickly perform a good EMI compliance test. With this cost effective test, time and money are saved by avoiding extra visits to expensive EMC testing facilities. The supplied TP-EMI-HS6 probe set contains three magnetic field (H field) probes and one electric field (E field) probe. The tripod ensures that the probes can be positioned properly at the object under test.

The Handyscope HS6 EMI analyzer has a very low resolution bandwidth of up to 7.45 Hz (at a span of 500 MHz), which is unique in its class. As a result, details in each part of the spectrum can be analyzed thoroughly.

To clarify: a resolution bandwidth of 7.45 Hz at a span of 500 MHz gives a total of 67,108,864 spectral components. When your display is 1920 pixels wide, you require 34,952 displays to show the full spectrum 1:1. 34,952 displays with a width of 50 cm (23" diagonal) each, gives a total display width of 17.47 km (10.85 mile)! So, if you zoom in 35,000 times, you will get the spectral components 1:1 on your display. That is exceptional for an EMI analyzer and it makes each frequency component very well visible.

The Handyscope HS6 EMI analyzer consists of a Handyscope HS6-1000 with **option E** installed. Option E also requires option **XM** (extended memory) to be installed. Option E also includes the EMI probe set TP-EMI-HS6.

The EMI probe set TP-EMI-HS6 is a complete set of probes, conveniently packed in a carry case. The set contains three differently sized H field probes and an E field probe. To connect the probes to the scope, a short semi flexible antenna cable and a long flexible antenna cable are included. For proper grounding and termination, a grounded 50 Ohm terminator is also included. The tripod allows exact positioning of the probe near the test subject.

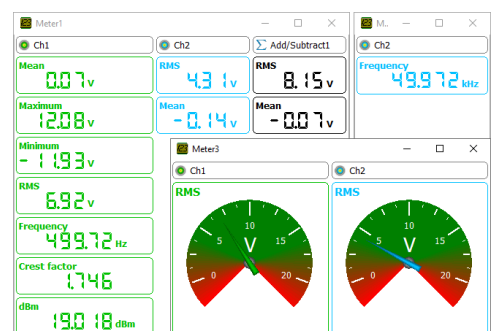


The EMI probe set TP-EMI-HS6.

High performance USB 3.0 digital multimeter



With the high resolution of 16 bits, the Handyscope HS6 can be used as a comprehensive and accurate high performance digital multimeter with good specifications (like e.g. RMS, peak-peak, Max, Min, Mean, Variance, Standard deviation, Frequency, duty cycle, Crest factor, Rise time, Fall time, dBm, etc.). Both numerical and gauge displays are available. The stable and very accurate time base of the Handyscope HS6 of 1ppm make very accurate frequency and time measurements possible. These qualities make an extra multimeter or frequency counter redundant and make the Handyscope HS6 unique in its class.



Highest DC accuracy in the industry of 0.1 % typical

Combining multiple instruments for fully synchronized measuring



The Handyscope HS6 is equipped with the sophisticated CMI bus, allowing to connect multiple Handyscope HS6's to each other, which then can be used as a combined instrument. All instruments will measure at the same sample frequency (0 ppm deviation!) Apart from a synchronization bus, the CMI also contains a trigger bus and a detection bus. Multiple Handyscope HS6's can be connected to each other using a coupling cable. The maximum number of instruments is only limited by the number of available USB ports.

When the Multi Channel software is started, the coupled Handyscope HS6's are identified and automatically combined to a larger instrument. Both the synchronization bus and the trigger bus are automatically terminated at both ends with the correct impedance. Placing terminators is not required by the user. Combining the instruments is fully automatic. This unique possibility to create e.g. a 12 channel instrument is only available with the Handyscope HS6 and no other brand USB 3.0 oscilloscope.

The Handyscope HS6 DIFF (www.tiepie.com/hs6d), Handyscope HS5 (www.tiepie.com/hs5), the WiFiScope WS6 DIFF (www.tiepie.com/ws6d), the WiFiScope WS6 (www.tiepie.com/ws6) and the WiFiScope WS5 (www.tiepie.com/ws5) are also equipped with the CMI bus. Coupling a Handyscope HS6 with a Handyscope HS5 gives a 6 channel measuring system with Arbitrary Waveform Generator.

See the CMI bus in action at https://youtu.be/20L_exU3Reg



With three Handyscope HS6's and two coupling cables you get a 12 channel oscilloscope with a high resolution of 12 bits and a maximum sampling rate of 1 GSa/s in a matter of seconds (no special software or hardware modifications required).

Long range wireless multi instrument synchronization



When using the Handyscope HS6 in combination with multiple Handyscopes and/or WiFiScopes, the Wireless Multi Instrument Synchronization Module WCMI is used to combine and synchronize the instruments.

When WCMI's are placed on the extension connectors of the instruments, the instruments are synchronized via an RF connection between the WCMI modules. The Multi Channel oscilloscope software automatically detects how many instruments are equipped with a WCMI module. All detected oscilloscopes, connected via WiFi, LAN or USB, are combined to one single oscilloscope with a total number of channels that equals the sum of the number of channels of the detected oscilloscopes. An accurate wireless RF connection between the WCMI modules will share the trigger signals, in order to start the combined scopes at exactly the same moment. The WCMI module has an internal automatic time synchronization system that takes care that all sample clocks of the oscilloscopes are synchronized.

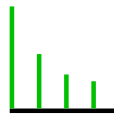
This allows to measure many signals simultaneously, using scopes that can be up to 400 m apart from each other. No long cabling is required between the scopes and the computer, which makes the setup very easy and hassle free.

Read more about the Wireless Multi Instrument Synchronization WCMI at www.tiepie.com/wcml



The Wireless Multi Instrument Synchronization WCMI module on a Handyscope HS6.

Troubleshooting in the frequency domain



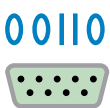
The Handyscope HS6 definitely brings an end to the idea that spectrum analyzers are expensive, hard to control and difficult to understand. The large flexibility of the spectrum analyzer makes it not just suitable for measuring high frequency signals of transmitters and receivers. A spectrum analyzer displays frequency along the X axis and along the Y axis the magnitude of the signal is displayed. This is called a frequency domain display.

When troubleshooting, usually an oscilloscope is used. But when the disturbance is small in amplitude and contains many frequencies, these signals are badly visible on an oscilloscope. They appear like noise signals. But, when these signals are viewed in the frequency domain, a much better overview is presented of the disturbance signals that are present and which frequencies they contain.

When e.g. measurements are performed on a system that contains switch mode power supplies, the disturbances caused by a power supply are easily detected by measuring in the frequency domain. The switch frequency of the switch mode power supply is measured by holding the probe close to the inductor of the power supply. This unique switch frequency is now known and can be stored in a reference channel. When this frequency is also measured at other locations in the system, the frequency is caused by the power supply. Precautions can be made to suppress the disturbing signal from the switch mode power supply. The suppression can be measured directly by the Handyscope HS6 USB 3.0 spectrum analyzer.

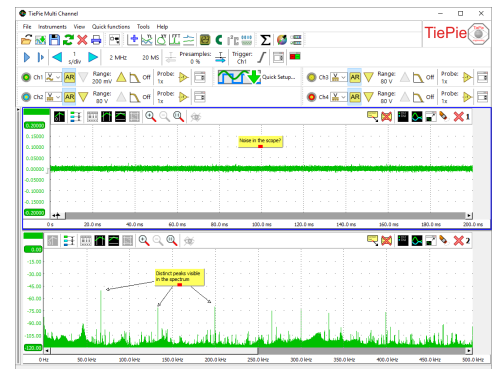
Because the Handyscope HS6 measures with a very high resolution in the frequency domain, disturbances can be detected and analyzed at one tenth of a Hertz accuracy. Up to 64 million frequency components can be displayed in a graph. Because of the high resolution of the Handyscope HS6 (14 and 16 bit resolution and up to 128 Mpoints record length), small disturbances can be easily detected. When a precaution is made to suppress the disturbance, its effectiveness can immediately be checked with the Handyscope HS6. With the high resolution and the large memory of the Handyscope HS6, a spectrum with a dynamic range of more than 120 dB can be measured. This is unique in its class. With this large dynamic range, distortion measurements can be well performed.

Protocol decoder



The various serial protocol decoders of the Handyscope HS6 can be used to decode and debug serial data buses. The data is displayed in an elaborate table with information on the serial data. Locating "wrong" data packets has become very easy. For each developer or service technician this is a welcome option. Protocol decoders for CAN bus data, I²C communication, SPI and various other serial data communication protocols are available.

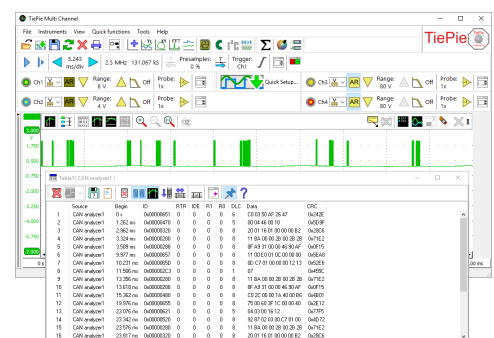
To the right, decoded CAN bus messages are shown.



A spectrum with 10 million points and a real time bandwidth of 0-250 MHz, gives you a bin width of 25 Hz and a pulse detection of 2 nsec.

This method of troubleshooting is only possible (and unique for the Handyscope HS6) because the Handyscope HS6 contains:

- 250 MHz bandwidth
- 14 and 16 bit resolution
- up to 128 Million samples memory
- very fast FFT calculations

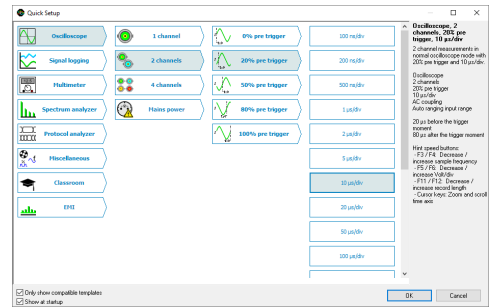


Fast to work with the Handyscope HS6 and Quick Setups



To simplify setting up measurements, the Multi Channel software contains a large number of Quick Setups, for almost any application. A Quick Setup contains the basic settings for a specific measurement as well as additional information regarding the selected Quick Setup, like e.g. how the instrument and/or accessories need to be connected. Quick Setups can also contain reference signals. After loading the Quick Setup, that specific measurement can be performed and if needed, small adjustments to the setup can be made.

The Quick Setups are carefully organized in a tree structure, ordered by application. Just a few mouse clicks allow to perform a complex measurement.

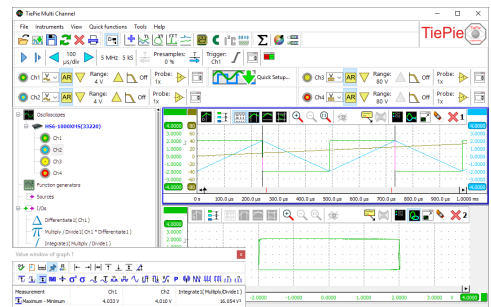


Sophisticated tools for in-depth signal analysis



The Multi Channel software for the Handyscope HS6 offers a large variety of mathematical operations like e.g. adding, subtracting, multiplying, dividing, integrating, differentiating, determining the square root, determining the logarithm, etc. These mathematical operations are available in the form of processing blocks and can be used to process the measured signals and reference signals. Besides the basic mathematical operations, there are also several processing blocks to perform more complex operations on the data, like determining minimum or maximum values, limiting to specified range, averaging, filtering, applying gain and offset, resampling etc.

Combining these mathematical processing blocks gives unrivaled possibilities in constructing complex mathematical operations to analyze your measurements thoroughly and obtain all the information you need from your data. The results can be displayed in graphs, numeric displays and tables and can be written to disk in various common file formats.



This measurement determines the area of an XY graph, using multiplying, integrating and differentiating I/O's. The area is indicated in the Value window: 16 V².

Apply gain and offset to a signal

Add or subtract signals

Multiply or divide signals

Determine the square root of a signal

Apply a selectable filter to a signal

Apply a selectable ideal filter to a signal

Shift the data in time

Output a selectable slice of the signal

Limit the signal magnitude

Determine the duty cycle of a signal

Determine the Root Mean Square value of a signal

Determine the absolute value of a signal

Differentiate a signal

Integrate a signal

Determine the logarithm of a signal

Cleans a periodical signal by removing disturbances

Average a number of consecutive measurements

Compare a signal with a certain reference level

Resample a signal to a different size

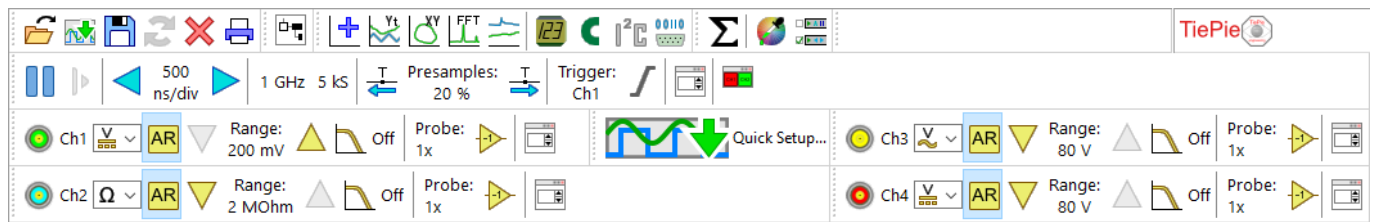
Apply a window function to a signal

Determine the phase difference of two signals

Perform a Fast Fourier Transform on a signal

The mathematical processing blocks give unrivaled possibilities in constructing complex mathematical operations.

Ease of use



The convenient toolbars offer many ways to control the Handyscope HS6. The toolbars are fully customizable to meet the user's demands. The size of the toolbar buttons can be changed to simplify touch screen control. There are toolbars available for common operations like saving or recalling measurements, for each opened instrument, for each channel and for the quick functions. Using quick functions, complex measurements can be performed immediately by a single click.

- | | |
|------------------------------------------------|------------------------------------|
| Open the Instrument or channel settings screen | Create a data logger |
| Open the Trigger settings screen | Create a multi meter |
| Open the Quick Setup screen | Create a CAN Bus decoder |
| Hide/show the Object Tree | Create an I ² C decoder |
| Create a new graph | Create a UART / serial decoder |
| Create an Yt oscilloscope | Create a math channel |
| Create an XY oscilloscope | Select a color scheme |
| Create a spectrum analyzer | Select a toolbar scheme |

With the cursor measurements, individually for each graph, many signal properties can be determined.

- | | |
|------------------------------------------------|-----------------------------------------|
| Sample value at the left cursor | Standard deviation of all signal values |
| Sample value at the right cursor | Frequency of the signal |
| Value difference between right and left cursor | Period time of the signal |
| Value at the top cursor | Duty cycle of the signal |
| Value at the bottom cursor | Crest factor of the signal |
| Value difference between top and bottom cursor | Rise time of the signal |
| Slope between the cursors | Fall time of the signal |
| Maximum signal value | Slew rate of the signal |
| Minimum signal value | Number of periods |
| Top-bottom value | Number of pulses |
| RMS value of the signal | Number of rising/falling edges |
| Mean value of the signal | dBm value of the signal |
| Variance of all signal values | Power of the signal |

Specifications

Acquisition system					
Number of input channels	4 analog				
CH1, CH2, CH3, CH4	BNC				
Maximum sampling rate	HS6-1000		HS6-500		HS6-200
8 bit					
Measuring one channel	1 GSa/s		500 MSa/s		200 MSa/s
Measuring two channels	500 MSa/s		200 MSa/s		100 MSa/s
Measuring three or four channels	200 MSa/s		100 MSa/s		50 MSa/s
12 bit					
Measuring one channel	500 MSa/s		200 MSa/s		100 MSa/s
Measuring two channels	200 MSa/s		100 MSa/s		50 MSa/s
Measuring three or four channels	100 MSa/s		50 MSa/s		20 MSa/s
14 bit	100 MSa/s		50 MSa/s		20 MSa/s
16 bit	6.25 MSa/s		3.125 MSa/s		1.25 MSa/s
Maximum streaming rate ¹	HS6-1000		HS6-500		HS6-200
When connected to	USB 3.0	USB 2.0	USB 3.0	USB 2.0	USB 3.0 / 2.0
8 bit					
Measuring one channel	200 MSa/s	40 MSa/s	100 MSa/s	40 MSa/s	40 MSa/s
Measuring two channels	100 MSa/s	20 MSa/s	50 MSa/s	20 MSa/s	20 MSa/s
Measuring three or four channels	50 MSa/s	10 MSa/s	25 MSa/s	10 MSa/s	10 MSa/s
12 bit					
Measuring one channel	100 MSa/s	20 MSa/s	50 MSa/s	20 MSa/s	20 MSa/s
Measuring two channels	50 MSa/s	10 MSa/s	25 MSa/s	10 MSa/s	10 MSa/s
Measuring three or four channels	25 MSa/s	5 MSa/s	12.5 MSa/s	5 MSa/s	5 MSa/s
14 bit					
Measuring one channel	100 MSa/s	20 MSa/s	50 MSa/s	20 MSa/s	20 MSa/s
Measuring two channels	50 MSa/s	10 MSa/s	25 MSa/s	10 MSa/s	10 MSa/s
Measuring three or four channels	25 MSa/s	5 MSa/s	12.5 MSa/s	5 MSa/s	5 MSa/s
16 bit	6.25 MSa/s	3.125 MSa/s	3.125 MSa/s	3.125 MSa/s	1.25 MSa/s
Sampling source					
Internal	TCXO				
Accuracy	±0.0001 %				
Stability	±1 ppm over 0 °C to 55 °C				
Time base aging	±1 ppm per year				
External	LVDS, on auxiliary connectors				
Input range	10 MHz, 16,369 MHz				
Memory	Standard model		XM option		
8 bit					
Measuring one channel	1 Mpts / channel		256 Mpts / channel		
Measuring two channels	512 Kpts / channel		128 Mpts / channel		
Measuring three or four channels	256 Kpts / channel		64 Mpts / channel		
12, 14, 16 bit					
Measuring one channel	512 Kpts / channel		128 Mpts / channel		
Measuring two channels	256 Kpts / channel		64 Mpts / channel		
Measuring three or four channels	128 Kpts / channel		32 Mpts / channel		
BNC inputs CH1, CH2, CH3, CH4					
Type	Single ended inputs				
Resolution	User selectable in software				
Native	8, 12, 14 bit				
Enhanced	16 bit				
DC Accuracy	0.25 % (0.1 % typical) of full scale ± 1 LSB at 20 to 25 °C To achieve rated accuracy, allow the instrument to settle for 20 minutes. When subjected to extreme temperatures, allow additional time for internal temperatures to stabilize.				
	HS6-1000		HS6-500		HS6-200
Bandwidth (-3dB) at 75 % of full scale input	250 MHz		250 MHz		250 MHz
AC coupling cut off frequency (-3dB)	±1.5 Hz		±1.5 Hz		±1.5 Hz
Bandwidth limit, selectable per channel	Off (250 MHz) 150 MHz 100 MHz 50 MHz		Off (250 MHz) 150 MHz 100 MHz 50 MHz		Off (250 MHz) 150 MHz 100 MHz 50 MHz
Noise	240 μVRMS (200 mV range, 12 bit, 50 MSa/s) 90 μVRMS (200 mV range, 16 bit, 6.25 MSa/s)				
Input ranges (full scale)	±200 mV ±400 mV ±800 mV	±2 V ±4 V ±8 V	±20 V ±40 V ±80 V		
Coupling	AC/DC				
Impedance	1 MΩ / 20 pF ± 1 %				
Maximum input voltage	200 V (DC + AC peak < 10 kHz)				
SureConnect	Optionally available (option S)				
Maximum voltage on connection	200 V (DC + AC peak <10 kHz)				
Resistance measurement	Optionally available (option S)				
Ranges	100 Ohm to 2 MOhm full scale				
Accuracy	1 %				
Response time (to 95 %)	<10 μs				

1. On some computers, the highest streaming rates may not be available, due to computer restrictions.

Trigger	
System	Digital, 2 levels
Source	CH1, CH2, CH3, CH4, digital external, OR
Trigger modes	Rising / Falling / Any edge, Inside / Outside window, Enter / Exit window, Pulse width, Interval (time conditions only on Ch1) (time conditions only on Ch1) (only on Ch1) (only on Ch1)
Level adjustment	0 to 100 % of full scale
Hysteresis adjustment	0 to 100 % of full scale
Resolution	0.024 % (12 bits)/0.006 % (14/16 bits)
Pre trigger	0 to selected record length, 1 sample resolution
Post trigger	0 to selected record length, 1 sample resolution
Trigger hold-off	0 to 63 MSamples, 1 sample resolution
Trigger delay	0 to 16 GSamples, 1 sample resolution
Digital external trigger	
Input	Extension connector pins 1, 2
Range	0 to 2.5 V (TTL)
Coupling	DC
Jitter	≤ 1 sample

Multi instrument synchronization	
via CMI interface	
Maximum number of instruments	Limited by number available USB ports
Synchronization accuracy	0 ppm
CMI interface	2x, AUX I/O 1, AUX I/O 2
Required coupling cable	TP-C50H
Maximum coupling cable length	50 cm
via WCM modules	
Maximum number of instruments	Unlimited
Required coupling module	WCM1-8, WCM1-9
Clock synchronization accuracy	≤ 1 ppm, typical ≤ 0.2 ppm
Trigger jitter at sample rate *	≤ 1 MSa/s > 1 MSa/s
2 x "5"	≤ ±2 samples ≤ ±2 μs
"5" and "6"	
Trigger source = "5"	≤ ±2 samples ≤ ±2 μs
Trigger source = "6"	≤ ±8 samples ≤ ±8 μs
2 x "6"	≤ ±8 samples ≤ ±8 μs
* "5" = WiFiScope WS5 or Handyscope HS5	
"6" = WiFiScope WS6 (DIFF) or Handyscope HS6 (DIFF)	

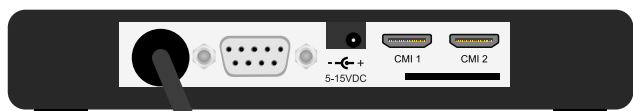
Probe calibration	
Output	Extension connector pins 3 (signal) and 6 (ground)
Signal	Square wave
Level	-1 V to 1 V
Frequency	1 kHz

I/O connectors	
Front	



CH1, CH2, CH3, CH4 BNC

Rear	
------	--



USB	Fixed cable with USB type A plug, 1.8 m
Extension connector	D-sub 9 pins female
Power	3.5 mm power socket
CMI connectors 1 to 2	HDMI type C socket

Physical	
Height	25 mm / 1.0"
Length	170 mm / 6.7"
Width	140 mm / 5.2"
Weight	500 g / 17.6 ounce
USB cord length	1.8 m / 70"

Interface	
Interface	USB 3.0 SuperSpeed (5 Gbit/s)

System requirements	
PC I/O connection	USB 2.0 USB 3.0 or USB 3.1
Operating System	Windows 10 / 11, 64 bit Linux, 64 bit (only via SDK)

Environmental conditions	
Operating	
Ambient temperature	20 to 25 °C (10 to 40 °C without specifications)
Relative humidity	5 to 90 % non condensing
Storage	
Ambient temperature	-20 to 70 °C
Relative humidity	5 to 95 % non condensing

Certifications and Complies	
CE mark compliance	Yes
RoHS	Yes
EN 55011:2016/A1:2017	Yes
EN 55022:2011/C1:2011	Yes
IEC 61000-6-1:2019 EN	Yes
IEC 61000-6-3:2007/A1:2011/C11:2012	Yes

Power	
Power	From USB or external input
Consumption	5 Vdc, 1300 mA max
External power	From second USB port or power adapter

Power adapter	
Input	TP-UES24LCP-120200SPA
Output	110 to 240 Vac, 50 to 60 Hz
Dimension	12 Vdc, 2.0 A
Height	88 mm
Width	30 mm
Length	57 mm
Replaceable mains plugs for	EU, US, AU, UK
Order number	TP-UES24LCP-120200SPA



Probes	
Attenuation settings	X1 X10
Bandwidth	6 MHz 250 MHz
Rise time	58 ns 1.4 ns
Input impedance	1 MΩ (scope impedance) 10 MΩ (incl. 1 MΩ scope impedance)
Input capacitance	56 pF + scope capacitance 13 pF
Compensation range	- 10 to 30 pF
Working voltage (DC + peak AC)	300 V, 150 V CAT II 600 V, 300 V CAT II



Probe compensation cable	
Connectors	TP-DB-BNC-30
Instrument side	9 pin D-Sub male
Probe side	BNC
Connections	D-sub BNC
Signal	pin 3 Center pin
Ground	pin 6 Outer ring
Dimensions	
Length	300 mm
Weight	30 g
Order number	TP-DB-BNC-30



Handyscope HS6, the USB 3.0 oscilloscope packed with technology

Accessories included	
Instrument	Handyscope HS6 : HS6-xxx-xx (see below)
Probes	4 x HP-3250I x1 / x10 switchable probes, 250 MHz
Accessories	Power adapter : TP-UES24LCP-120200SPA USB power cable : TP-USB-PWR-P3.5 Probe compensation cable TP-DB-BNC-30, for calibrating the HP-3250I probe EMI probe set TP-EMI-HS6, only with option E
Drivers	For Windows 10 / 11, 64 bit via website
Software	For Windows 10 / 11, 64 bit via website
Software Development Kit	For Windows 10 / 11 and Linux, 64 bit via website
Manual	Instrument manual and software user's manual



Optional accessories	must be ordered separately	
Optional accessories	Order code	
Coupling cable	TP-C50H	Coupling cable to couple two Handyscope HS6s. The TP-C50H must be ordered separately.
Wireless coupling module	WCMI-8, WCMI-9	Module to wirelessly synchronize Handyscope HS6s. The WCMI-n must be ordered separately.
Single ended measure lead	TP-BNCI-100	To connect 4 mm banana clips and probes. The TP-BNCI-100 must be ordered separately.
Thin back probes	TP-BP85	To (back) probe narrow spaces. TP-BP85 must be ordered separately.
Large alligator clamps	TP-AC80I	Large alligator clips with 4 mm banana socket. The TP-AC80I must be ordered separately.
Medium alligator clamps	TP-AC10I	Medium alligator clips with 4 mm banana socket. The TP-AC10I must be ordered separately.
Small alligator clamps	TP-AC5	Small alligator clips with 4 mm banana socket. The TP-AC5 must be ordered separately.

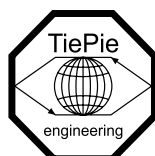
Warranty	
Warranty	Two year standard, five years optional, covering all parts and labor, excluding probes

Customer service
The Handyscope HS6 is designed, manufactured and tested to provide high reliability. In the unlikely event you experience difficulties, the Handyscope HS6 is fully warranted for three years. This warranty includes: <ul style="list-style-type: none">• No charge for return shipping• Long-term 7-year support• Upgrade to the latest software at no charge

Ordering information	
Handyscope HS6 Model	Order code
1 GSa/s, 1 MS, 2 year warranty	HS6-1000
500 MSa/s, 1 MS, 2 year warranty	HS6-500
200 MSa/s, 1 MS, 2 year warranty	HS6-200

Available options for the Handyscope HS6 are:

- **XM**: With the extended memory option, 256 MSamples memory is available. Add **XM** to the order code.
- **E**: With the EMI option, the Handyscope HS6 can be used as EMI pre compliance tester. The option includes the TP-EMI-HS6 probe set. The EMI option is only available on a Handyscope HS6-1000 and requires option XM to be installed as well. Add **E** to the order code.
- **S**: With the **SureConnect** option, connection test and resistance measurement are available on all channels. Add **S** to the order code.
- **W5**: With the extended warranty option, warranty is five years on parts and labor. Add **-W5** to the order code.



TiePie engineering
Koperslagersstraat 37
8601 WL Sneek
The Netherlands

Tel.: +31 515 415 416
Fax: +31 515 418 819
E-mail: sales@tiepie.nl
www.tiepie.com/HS6



This information is subject to change without notice. Copyright © 2024 TiePie engineering. All rights reserved. Revision 1.4, December, 2024.