

TEAM

SOLUTIONS, INC

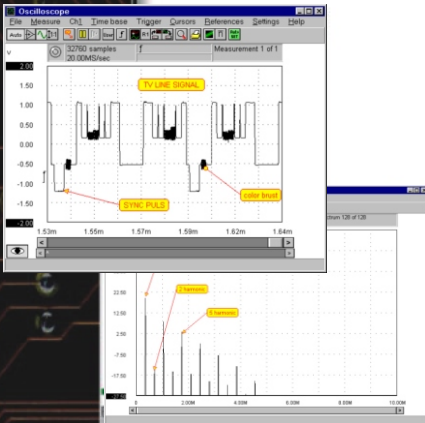
DIGITAL STORAGE OSCILLOSCOPE SPECTRUM ANALYZER TRANSIENT RECORDER VOLTMETER

TE6100

- Four Instruments In One
- 100 MS/Sec DSO/Spectrum
- DC to 50 MHz Bandwidth
- 100mV to 80V Full Scale
- Powerful Software



The TE6100 is the first 100 MS/SEC measuring instrument that consists of a Digital Storage Oscilloscope, Spectrum Analyzer, Transient recorder and Voltmeter. This new PXI based, compact measuring instrument, can solve almost every measurement problem. Analyzing signals is done with an 8-bit resolution and a maximum sampling speed of 100 MHz. The input ranges 0.1 volt full scale to 80 Volt full scale. The record length is 32K/64K samples.

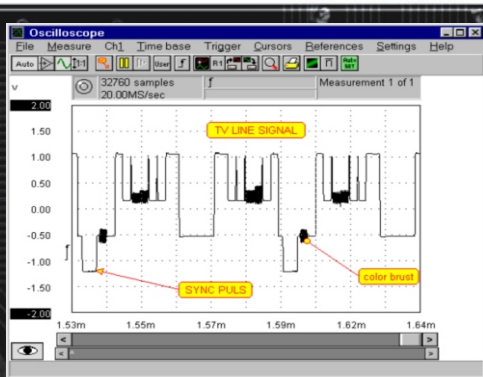


SPECIFICATIONS

Hardware

Input channels	2 analog BNC, 1 digital external trigger
A/D converter	
Resolution	8 bits=0.39%
Effective data throughput	50,000,000 samples/sec, 100,000,000 samples/sec on one channel
Conversion time	20 nsec, 10 nsec on one channel
Maximum Voltage	200 volt (DC+AC peak < 10 kHz)
Impedance	1Mohm/ 30 pF
Coupling	AC/DC
Accuracy	1% \pm 1 LSB
Bandwidth	DC to 50 MHz
Digital external trigger	0-5 volt TTL
Trigger system	edge, window, peak, TV, external
Trigger modes	digital to levels 8 bit resolution
Level adjustment	0-100% of full scale
Resolution	0.39% (8bit)
Pre trigger	0-32768 samples (0-100%)
Post trigger	0-32768 samples (0-100%)
Maximum sample rate	50 MHz on 2 channels, 100 Mhz on one channel
Memory	32/64 KWord per channel
Ambient temperature	10°C- 35°C
Dimensions	PXI, 3U single slot
Accessories	2 oscilloscope probes 1:1-1:10 switchable

T&M Instruments For The PC



DIGITAL STORAGE OSCILLOSCOPE

Time Base

Record length
Pre trigger
Sampling
Magnification

adjustable between 10 samples and 32760 samples
adjustable between 0 and 100%
adjustable between 100 mHz - 100 MHz
adjustable between 1 and ± 50 (depends on display size)

Vertical

Sensitivity
Coupling
Hardware offset
Software offset
Software gain
Software invert
Measurement unit
Axis re-definable

100 mV.. 80 V full scale in 2-4-8 sequence and autoranging
AC / DC selectable through menu, button and keyboard
-2 * input range .. +2 * input range
-input range .. +input range, mouse controlled
0.25 .. 4, mouse controlled
yes
12 presets and user definable
yes

Trigger

Source

Ch1, Ch2, Ch1 and Ch2, Ch1 or Ch2, Ch1 xor Ch2, Analog Ext, Digital Ext Rising slope, falling slope, inside window, outside window, TV frame, TV line

Mode

fully adjustable between +input range and -input range and autolevel fully adjustable between 0 and 2 * input range

Level

0 - 100 sec and infinite

Hysteresis

0 - 100%

Time out

0 - infinite

Measuring

Channels
XY
Single shot
Auto setup
Averaging
Envelope mode
Auto disk logging
Math
Functions

Ch1, Ch2, Ch1 and Ch2
yes
yes
yes, affects sensitivity, trigger level and sampling frequency
1 - 256 measurements
yes, resets after 2 .. infinite measurements (user selectable)
yes
yes, in separate trace
Ch1 + Ch2, Ch1 - Ch2, Ch2 - Ch1

Cursors

Cursors
Vertical readout
Horizontal readout
Measurements readout

two pair horizontal and vertical
voltage left, voltage right, voltage difference
time left, time right, time difference, cursor frequency
True RMS, Peak to peak, Mean, Max, Min, dBm, Power, Crest factor, frequency, duty cycle
readout at left cursor, at right cursor
readout degrees, rad, cos()
selectable between free adjustable and waveform based
automatic zero crossing detection readout window fully Configurable

Reference channels

Reference channels
Individually selectable
Scaleable to live signals

2, one for each live channel
yes
yes

Miscellaneous

Save/recall waveforms
File type
Save/restore settings
Hardcopy
Hardcopy preview
Measurement comment
Text balloons
Interpolation

yes
binary / ascii
yes
yes, color / black
yes
yes, 3 lines of 80 characters
yes, fully configurable
yes, linear and quadratical

TEAM
SOLUTIONS, INC

SPECTRUM ANALYZER

Frequency Axis

Record length
Frequency range
Magnification
Axis type

32, 64, 128, 256, 512, 1024, 2048, 4096, 8192 and 16384 bins
adjustable between 50 mHz - 50 MHz
adjustable between 1 and ± 50 (depends on display size)
linear, logarithmic, in octaves, in thirds of octaves

Vertical

Sensitivity
Coupling
Hardware offset
Software offset
Software gain
Software invert
Measurement unit
Axis type
Axis re-definable

100 mV .. 80 V full scale in 2-4-8 sequence & autoringing
AC / DC selectable through menu, button and keyboard
-2 * input range .. +2 * input range
-input range .. +input range, mouse controlled
0.25 .. 4, mouse controlled
yes
12 presets and user definable
linear / logarithmic
yes

Measuring

Channels
Single shot
Averaging
Measuring max. Values
Total Harmonic Distortion
Isolation of harmonics
Windowing functions

Ch1, Ch2, Ch1 and Ch2
yes
1 - 256 measurements
yes
yes, up to 100 harmonics (selectable) in % and dB
yes
rectangle, Hamming, Hanning, Bartlett, Parzen, Blackman

Cursors

Cursors
Vertical readout
Horizontal readout
THD
Other features

two pair horizontal and vertical
voltage left, voltage right, voltage difference
frequency left, frequency right, frequency difference
yes
selectable between free adjustable and waveform
based readout window fully configurable

Reference channels

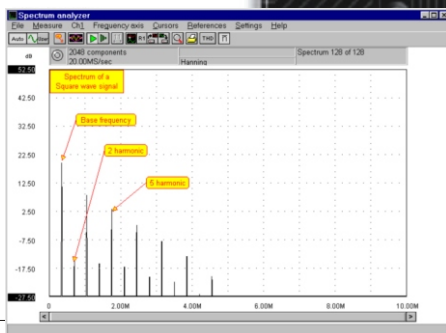
Reference channels
Individually selectable
Scaleable to live signals

2, one for each live channel
yes
yes

Miscellaneous

Save/recall waveforms
File type
Save/restore settings
Hardcopy
Hardcopy preview
Measurement comment
Text balloons
Interpolation

yes
binary / ascii
yes
yes, color / black
yes
yes, 3 lines of 80 characters
yes, fully configurable
yes, linear and quadratical



VOLTMETER

Display

Per channel
Measurements
Displayed value

0 - 3
True RMS, Peak to peak, Mean, Max, Min, dBm, Power,
Crest factor, frequency, duty cycle
Ch1, Ch2, Ch1+Ch2, Ch1-Ch2, Ch2-Ch1, Ch1*CH2, Ch1/Ch2,
Ch2/Ch1, Min, Max, > then HI, < then LO, <= HI LO, >= COMP,
log(Ch1/Ch2), log(Ch2/Ch1)

Measurement unit
Number of decimal figures
Relative measuring
Bar graph

Volt, Ampere, degrees C, degrees F, Watt, percent,
Bar, Coulomb, Newton, Hertz, meter, kilogram
0.5 and automatic
yes
yes

Measuring

Channels
Single shot
Averaging
Logging
Logging speed
compare measurements

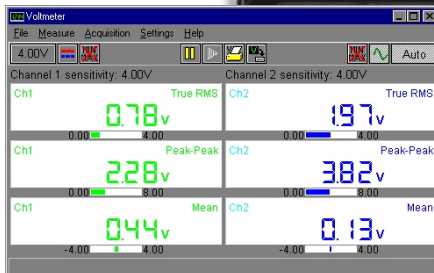
Ch1, Ch2, Ch1 and Ch2
yes
yes, 3 measurements
disk or printer
0 .. 300 sec between measurements
compare measured value to levels
and show LO, HI, PASS or FAIL

Compare levels
Measurements

2, LO and HI
> then HI
< then LO
<= LO HI
>= COMP

Sounds

individual sounds assignable
to LO, HI, PASS and FAIL



T&M Instruments For The PC

SPECIFICATIONS

TRANSIENT RECORDER

Time base

Record length	adjustable between 10 samples and 32760 samples
Sampling speed	adjustable between 2 mHz-100 Hz
Magnification	adjustable between 1 and ± 50 (depends on display size)
Axis mode	adjustable between sample time and real time

Vertical

Sensitivity	100 mV .. 80V full scale in 2-4-8 sequence
Coupling	AC/DC selectable through menu, button and keyboard
Hardware offset	-2* input range .. +2* input range
Software offset	- input range .. + input range, mouse controlled
Software gain	0.25 .. 4, mouse controlled
Software invert	yes
Measurement unit	12 presets and user definable
Axis re-definable	yes

Measuring

Channels	Ch1, Ch2, Ch1 and Ch2
Display mode	roll mode, scan mode
Auto disk logging	yes
Auto start measuring	yes

Cursors

Cursors	two pair horizontal and vertical
Vertical readout	voltage left, voltage right, voltage difference
Horizontal readout	time left, time right, time difference, cursor frequency
Measurement readout	True RMS, Peak to peak, Mean, Max, Min, dBm, Power, Crest factor, frequency, duty cycle
Rise time readout	at left cursor, at right cursor
Phase difference readout	degrees, rad, cos
Other features	selectable between free adjustable and waveform based automatic zero crossing detection readout window fully configurable

Reference channels

Reference channels	2, one for each live channel
Individually selectable	yes
Scaleable to live signals	yes

Miscellaneous

Save/recall waveforms	yes
File type	binary / ascii
Save/restore settings	yes
Hardcopy	yes, color/black
Hardcopy preview	yes
Measurement comment	yes, 3 lines of 80 characters
Text balloons	yes, fully configurable
Interpolation	yes, linear and quadratical

TEAM
SOLUTIONS, INC

Established in 1999, TEAM's mission is to provide its customers with state-of-the-art, PC-Based, Test & Measurement instrumentation. TEAM's products are offered in ISA, PCI, External (Parallel/USB driven), Compact PCI and PXI configuration.

Our Product Line Includes:

- Up to 18 slots, Industrial PC & Compact PCI/PXI enclosures
- Programmable Power Supplies
- Switching, Scanning & Multiplexing (DC to 20GHz)
- 5.5 & 6.5 digit DMMs
- 100MHz Digital Storage Oscilloscope
- 100MHz Spectrum Analyzer
- 50 & 100 MS/Sec. Arbitrary Waveform Generator
- 10KHz to 100MHz Signal Source
- 200 MHz, 16 Channels, Logic Analyzer
- 50 MHz, Dynamic Digital I/O
- Prototypes & many more..



TiePie engineering
Koperslagersstraat 37
8601 WL SNEEK
The Netherlands

Tel: +31 515 415 416
Fax: +31 515 418 819
E-mail: support@tiepie.nl
Web page: <http://www.tiepie.nl>

T&M Instruments For The PC