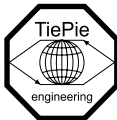


Automotive Test Scope ATS5004DW

User manual



USB
Network
WiFi
Battery power



TiePie engineering

ATTENTION!

Measuring directly on the **line voltage** can be very dangerous.

Copyright ©2024 TiePie engineering.
All rights reserved.

Revision 2.46, March 2024

This information is subject to change without notice.
Despite the care taken for the compilation of this user manual,
TiePie engineering can not be held responsible for any damage
resulting from errors that may appear in this manual.

Contents

1	Welcome	1
2	Safety	3
3	Declaration of conformity	5
4	Introduction	9
4.1	Differential input	9
4.1.1	Differential attenuators	11
4.1.2	Differential test lead	13
4.2	Sampling	13
4.3	Sampling rate	14
4.3.1	Aliasing	14
4.4	Digitizing	16
4.5	Signal coupling	16
5	Driver installation	19
5.1	Introduction	19
5.2	Computers running Windows 10	19
5.3	Computers running Windows 8 or older	19
5.3.1	Where to find the driver setup	19
5.3.2	Executing the installation utility	19
6	Hardware installation	23
6.1	Power the instrument	23
6.1.1	Charging the battery	24
6.1.2	Long term storage	24
6.2	Instrument operation mode	25
6.3	Connect via LAN	27
6.4	Connect via WiFi	28
6.4.1	The computer/laptop has WiFi	28
6.4.2	The computer/laptop has NO WiFi	29
6.5	Connect via USB	31

6.5.1	Plug into a different USB port	31
7	Instrument ground compensation	33
7.1	Ground compensation cable	33
7.2	When using the the ground compensation cable	33
7.3	When is the ground compensation not required	34
7.4	Why ground compensation?	34
8	Front panel	35
8.1	Channel input connectors	35
8.2	Power/Mode button	35
8.3	Status indicators	35
8.3.1	Status	35
8.3.2	LAN	35
8.3.3	WiFi	36
8.3.4	USB	36
8.3.5	Batt	36
9	Rear panel	37
9.1	Power	37
9.1.1	Power adapter	38
9.2	USB	38
9.3	LAN	38
9.4	Extension Connector	39
9.5	Ground connector	39
9.6	Factory reset	40
9.7	Ventilation slots	40
10	Firmware update	41
10.1	Preparation	41
10.2	Switching to firmware update mode	41
10.3	Updating the firmware	42
11	Web interface	45
11.1	Enter the web interface	45
11.2	Setting a fixed IP address	46

12 Specifications 47

12.1 Acquisition system 47

12.2 Trigger system 48

12.3 Physical 48

12.4 Power 48

12.5 I/O connectors 48

12.6 Interface 49

12.7 System requirements 49

12.8 Environmental conditions 49

12.9 Certifications and Compliances 49

12.10 Differential attenuators 50

12.11 Measure leads 50

12.12 Package contents 51

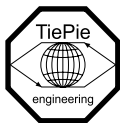
12.13 Warranty 51

Wireless measuring has now become a reality with the Automotive Test Scope ATS5004DW. If a large distance needs to be bridged between the measuring instrument and the PC, the Automotive Test Scope ATS5004DW is the solution for this. Fast measurements and high speed data acquisition are now possible wherever the Automotive Test Scope ATS5004DW is located in the world.

- Because the Automotive Test Scope ATS5004DW is battery-powered, it can be used stand-alone for a long time.
- For measurements in hazardous situations or places where it is not accessible to people for long, the Automotive Test Scope ATS5004DW offers the solution.
- A connection via WiFi or Network (LAN or WAN with possibly POE) gives the user the possibility to place the measuring instrument where this was previously not possible.
- Collecting and viewing measurement data from different locations on a PC / Laptop is now a possibility because the software supports more WiFiScopes at the same time.
- With the very extensive software package, most measurements can be performed.
- A large library of presets is available so that a novice user can immediately perform advanced measurements with a few mouse clicks.
- The Automotive Test Scope ATS5004DW has 4 input channels with a maximum sampling rate of 50 MSa/s and a bandwidth of 50 MHz.
- With a WiFi connection, the Automotive Test Scope ATS5004DW is no longer directly connected to the PC or laptop and short circuits are excluded, this eliminates the fear that something will happen to the PC or Laptop.
- A big advantage of the WiFiScopes is that no ground loops can occur. In traditional measurement systems, ground loops give many problems, resulting in unreliable measurement results. With the WiFiScope, because of the absence of ground loops, long distance remote measurements are possible without the results being influenced by ground loops. Also on short distances the absence of ground loops is important for performing reliable measurements. The WiFiScope prevents ground loops from forming so that the measurement speed and resolution are not affected and the measurements remain reliable.
- Integrating the Automotive Test Scope ATS5004DW in your own software environment is supported by an API with examples so that the Automotive Test Scope ATS5004DW can be widely used
- Thanks to a very good hardware structure and advanced software drivers, the Automotive Test Scope ATS5004DW is suitable for high speed data acquisition up to speeds of 500 kSa/s and measurements up to 50 MSa/s with a record length of 128 kSamples of memory per channel with a resolution of 12 to 16 bit.

When working with electricity, no instrument can guarantee complete safety. It is the responsibility of the person who works with the instrument to operate it in a safe way. Maximum security is achieved by selecting the proper instruments and following safe working procedures. Safe working tips are given below:

- Always work according (local) regulations.
- Work on installations with voltages higher than 25 V_{AC} or 60 V_{DC} should only be performed by qualified personnel.
- Avoid working alone.
- Observe all indications on the Automotive Test Scope ATS5004DW before connecting any wiring
- Check the probes/test leads for damages. Do **not** use them if they are damaged
- Take care when measuring at voltages higher than 25 V_{AC} or 60 V_{DC}.
- Do not operate the equipment in an explosive atmosphere or in the presence of flammable gases or fumes.
- Do not use the equipment if it does not operate properly. Have the equipment inspected by qualified service personal. If necessary, return the equipment to TiePie engineering for service and repair to ensure that safety features are maintained.



TiePie engineering
Koperslagersstraat 37
8601 WL Sneek
The Netherlands

EC Declaration of conformity

We declare, on our own responsibility, that the product

Automotive Test Scope ATS5004DW

for which this declaration is valid, is in compliance with

EC directive 2011/65/EU (the RoHS directive)
including up to amendment 2021/1980,

EC regulation 1907/2006 (REACH)
including up to amendment 2021/2045,

and with

EN 55011:2016/A1:2017
EN 55022:2011/C1:2011

IEC 61000-6-1:2019 EN
IEC 61000-6-3:2007/A1:2011/C11:2012 EN

according the conditions of the EMC standard 2004/108/EC,

also with

Canada: ICES-001:2004

Australia/New Zealand: AS/NZS CISPR 11:2011

and

IEC 61010-1:2010/A1:2019

USA: UL 61010-1, Edition 3

and is categorized as 30 Vrms, 42 Vpk, 60 Vdc

Sneek, 1-9-2022
ir. A.P.W.M. Poelsma

FCC statement

FCC 15.119

This device complies with Part 15 of FCC Rules. Operation is Subject to following two conditions:

1. This device may not cause harmful interference, and
2. This device must accept any interference received including interference that cause undesired operation.

FCC 15.105

This equipment has been tested and found to comply within the limits for a Class B digital device, pursuant to part 15 of the FCC Rules. These limits are designed to provide reasonable protection against harmful interference in a residential installation. This equipment generates, uses, and can radiate radio frequency energy and, if not installed and used in accordance with the instructions, may cause harmful interference to radio communications. However, there is no guarantee that interference will not occur in a particular installation. If this equipment does cause harmful interference to radio or television reception, which can be determined by turning the equipment off and on, the user is encouraged to try to correct the interference by one or more of the following measures:

- Reorient or relocate the receiving antenna
- Increase the separation between the equipment and receiver
- Connect the equipment into an outlet on a different circuit from that to which the receiver is connected.
- Consult the dealer or an experienced radio/TV technician for help.

Any changes or modifications not expressly approved by TiePie engineering can void the authority to operate equipment.

This equipment complies with FCC radiation exposure limits set forth for an uncontrolled environment. This equipment should be installed and operated with minimum distance of 20 cm between the radiator and your body

Environmental considerations

This section provides information about the environmental impact of the Automotive Test Scope ATS5004DW.

End-of-life handling

Production of the Automotive Test Scope ATS5004DW required the extraction and use of natural resources. The equipment may contain substances that could be harmful to the environment or human health if improperly handled at the Automotive Test Scope ATS5004DW's end of life.



In order to avoid release of such substances into the environment and to reduce the use of natural resources, recycle the Automotive Test Scope ATS5004DW in an appropriate system that will ensure that most of the materials are reused or recycled appropriately.

The shown symbol indicates that the Automotive Test Scope ATS5004DW complies with the European Union's requirements according to Directive 2002/96/EC on waste electrical and electronic equipment (WEEE).



Before using the Automotive Test Scope ATS5004DW first read chapter 2 about safety.

Many technicians investigate electrical signals. Though the measurement may not be electrical, the physical variable is often converted to an electrical signal, with a special transducer. Common transducers are accelerometers, pressure probes, current clamps and temperature probes. The advantages of converting the physical parameters to electrical signals are large, since many instruments for examining electrical signals are available.

The Automotive Test Scope ATS5004DW is a portable four channel measuring instrument with differential inputs. It can be connected to the computer via USB, wired ethernet and WiFi. When used via WiFi, the Automotive Test Scope ATS5004DW can be connected to an existing WiFi network or can act as access point to create its own WiFi network.

The Automotive Test Scope ATS5004DW is equipped with a built-in battery for wireless operation, but can also be powered by an external power supply (included in the package) or via the USB interface.

The native resolution is 12 bits, but user selectable resolutions of 14 and 16 bits are available too. The resolution affects the maximum sampling rate and the maximum continuous streaming rate of the Automotive Test Scope ATS5004DW:

Resolution	Maximum sampling rate	Maximum streaming rate
12 bit	50 MSa/s	500 kSa/s
14 bit	3.125 MSa/s	480 kSa/s
16 bit	195 kSa/s	195 kSa/s

Table 4.1: Maximum sampling rates

With the accompanying software the Automotive Test Scope ATS5004DW can be used as an oscilloscope, a spectrum analyzer, a true RMS voltmeter or a transient recorder. All instruments measure by sampling the input signals, digitizing the values, process them, save them and display them.

4.1 Differential input

Most oscilloscopes are equipped with standard, single ended inputs, which are referenced to ground. This means that one side of the input is always connected to ground and the other side to the point of interest in the circuit under test.

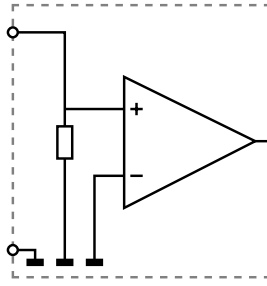


Figure 4.1: Single ended input

Therefore the voltage that is measured with an oscilloscope with standard, single ended inputs is always measured between that specific point and ground.

When the voltage is not referenced to ground, connecting a standard single ended oscilloscope input to the two points would create a short circuit between one of the points and ground, possibly damaging the circuit and the oscilloscope.

A safe way would be to measure the voltage at one of the two points, in reference to ground and at the other point, in reference to ground and then calculate the voltage difference between the two points. On most oscilloscopes this can be done by connecting one of the channels to one point and another channel to the other point and then use the math function $CH1 - CH2$ in the oscilloscope to display the actual voltage difference.

There are some disadvantages to this method:

- a short circuit to ground can be created when an input is wrongly connected
- to measure one signal, two channels are occupied
- by using two channels, the measurement error is increased, the errors made on each channel will be combined, resulting in a larger total measurement error
- The Common Mode Rejection Ratio (CMRR) of this method is relatively low. If both points have a relative high voltage, but the voltage difference between the two points is small, the voltage difference can only be measured in a high input range, resulting in a low resolution

A much better way is to use an oscilloscope with a differential input.

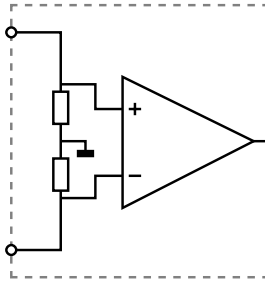


Figure 4.2: Differential input

A differential input is not referenced to ground, but both sides of the input are “floating”. It is therefore possible to connect one side of the input to one point in the circuit and the other side of the input to the other point in the circuit and measure the voltage difference directly.

Advantages of a differential input:

- No risk of creating a short circuit to ground
- Only one channel is required to measure the signal
- More accurate measurements, since only one channel introduces a measurement error
- The CMRR of a differential input is high. If both points have a relative high voltage, but the voltage difference between the two points is small, the voltage difference can be measured in a low input range, resulting in a high resolution

4.1.1 Differential attenuators

To increase the input range of the Automotive Test Scope ATS5004DW, it comes with a differential 1:10 attenuator for each channel. This differential attenuator is specially designed to be used with the Automotive Test Scope ATS5004DW.



Figure 4.3: Differential attenuator

For a differential input, both sides of the input need to be attenuated.

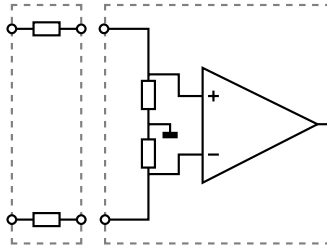


Figure 4.4: Differential attenuator matches with differential input

Standard oscilloscope probes and attenuators only attenuate one side of the signal path. These are not suitable to be used with a differential input. Using these on a differential input will have a negative effect on the CMRR and will introduce measurement errors.

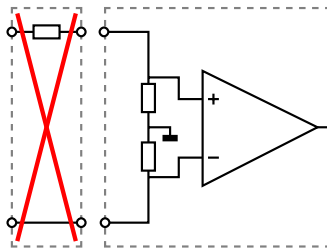


Figure 4.5: Standard probe is mismatch with differential input



The Differential Attenuator and the inputs of the Automotive Test Scope ATS5004DW are differential, which means that the outside of the BNCs are not grounded, but carry life signals.

When using the attenuator, the following points have to be taken into consideration:

- do not connect other cables to the attenuator than the ones that are supplied with the instrument
- do not touch the metal parts of the BNCs when the attenuator is connected to the circuit under test, they can carry a dangerous voltage. It will also influence the measurements and create measurement errors.
- do not connect the outside of the two BNCs of the attenuator to each other as this will short circuit a part of the internal circuit and will create measurement errors

- do not connect the outside of the BNCs of two or more attenuators that are connected to different channels of the Automotive Test Scope ATS5004DW to each other
- do not apply excessive mechanical force to the attenuator in any direction (e.g. pulling the cable, using the attenuator as handle to carry the Automotive Test Scope ATS5004DW, etc.)

4.1.2 Differential test lead

The Automotive Test Scope ATS5004DW comes with a special differential test lead. This test lead is specially designed to ensure a good CMRR.

The special heat resistant differential test lead provided with the Automotive Test Scope ATS5004DW is designed to be immune for noise from the surrounding environment.

4.2 Sampling

When sampling the input signal, samples are taken at fixed intervals. At these intervals, the size of the input signal is converted to a number. The accuracy of this number depends on the resolution of the instrument. The higher the resolution, the smaller the voltage steps in which the input range of the instrument is divided. The acquired numbers can be used for various purposes, e.g. to create a graph.

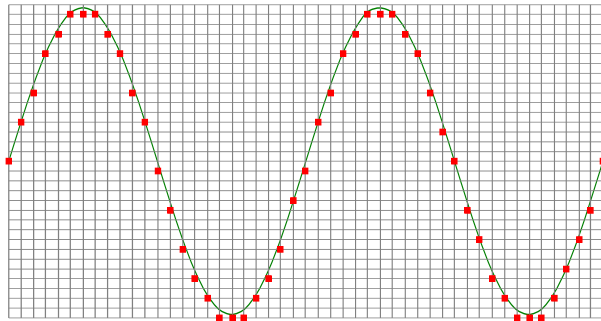


Figure 4.6: Sampling

The sine wave in figure 4.6 is sampled at the dot positions. By connecting the adjacent samples, the original signal can be reconstructed from the samples. You can see the result in figure 4.7.

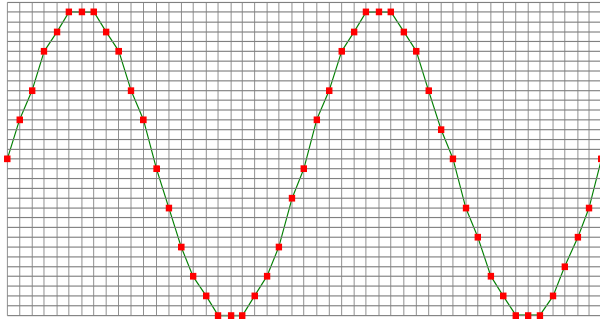


Figure 4.7: "connecting" the samples

4.3 Sampling rate

The rate at which the samples are taken is called the **sampling rate**, the number of samples per second. A higher sampling rate corresponds to a shorter interval between the samples. As is visible in figure 4.8, with a higher sampling rate, the original signal can be reconstructed much better from the measured samples.

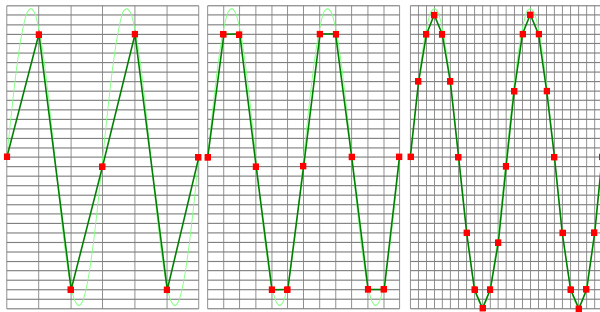


Figure 4.8: The effect of the sampling rate

The sampling rate must be higher than 2 times the highest frequency in the input signal. This is called the **Nyquist frequency**. Theoretically it is possible to reconstruct the input signal with more than 2 samples per period. In practice, 10 to 20 samples per period are recommended to be able to examine the signal thoroughly.

4.3.1 Aliasing

When sampling an analog signal with a certain sampling rate, signals appear in the output with frequencies equal to the sum and difference of the signal frequency and multiples of the sampling rate. For example, when the sampling rate is 1000 Sa/s and the signal frequency is 1250 Hz, the following signal frequencies will be present in the output data:

Multiple of sampling rate	1250 Hz signal	-1250 Hz signal
...		
-1000	$-1000 + 1250 = \mathbf{250}$	$-1000 - 1250 = -2250$
0	$0 + 1250 = 1250$	$0 - 1250 = -1250$
1000	$1000 + 1250 = 2250$	$1000 - 1250 = -250$
2000	$2000 + 1250 = 3250$	$2000 - 1250 = 750$
...		

Table 4.2: Aliasing

As stated before, when sampling a signal, only frequencies lower than half the sampling rate can be reconstructed. In this case the sampling rate is 1000 Sa/s, so we can only observe signals with a frequency ranging from 0 to 500 Hz. This means that from the resulting frequencies in the table, we can only see the 250 Hz signal in the sampled data. This signal is called an **alias** of the original signal.

If the sampling rate is lower than twice the frequency of the input signal, **aliasing** will occur. The following illustration shows what happens.

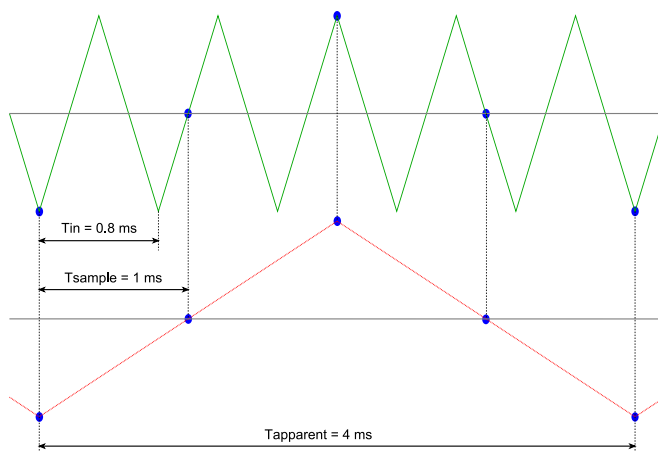


Figure 4.9: Aliasing

In figure 4.9, the green input signal (top) is a triangular signal with a frequency of 1.25 kHz. The signal is sampled with a rate of 1 kSa/s. The corresponding sampling interval is $1/1000\text{Hz} = 1\text{ms}$. The positions at which the signal is sampled are depicted with the blue dots. The red dotted signal (bottom) is the result of the reconstruction. The period time of this triangular signal appears to be 4 ms, which corresponds to an apparent frequency (alias) of 250 Hz ($1.25 \text{ kHz} - 1 \text{ kHz}$).



To avoid aliasing, always start measuring at the highest sampling rate and lower the sampling rate if required.

4.4 Digitizing

When digitizing the samples, the voltage at each sample time is converted to a number. This is done by comparing the voltage with a number of levels. The resulting number is the number corresponding to the level that is closest to the voltage. The number of levels is determined by the resolution, according to the following relation: $LevelCount = 2^{Resolution}$.

The higher the **resolution**, the more levels are available and the more accurate the input signal can be reconstructed. In figure 4.10, the same signal is digitized, using two different amounts of levels: 16 (4-bit) and 64 (6-bit).

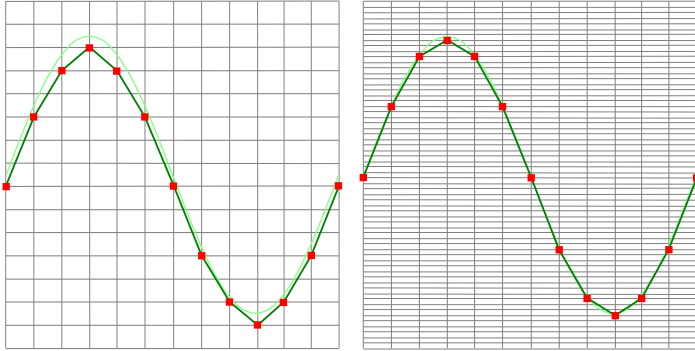


Figure 4.10: The effect of the resolution

The Automotive Test Scope ATS5004DW measures at e.g. 14 bit resolution ($2^{14}=16384$ levels). The smallest detectable voltage step depends on the input range. This voltage can be calculated as:

$$VoltageStep = FullInputRange / LevelCount$$

For example, the 200 mV range ranges from -200 mV to +200 mV, therefore the full range is 400 mV. This results in a smallest detectable voltage step of $0.400 \text{ V} / 16384 = 24.41 \text{ } \mu\text{V}$.

4.5 Signal coupling

The Automotive Test Scope ATS5004DW has two different settings for the signal coupling: AC and DC. In the setting DC, the signal is directly coupled to the input circuit. All signal components available in the input signal will arrive at the input circuit and will be measured.

In the setting AC, a capacitor will be placed between the input connector and the input circuit. This capacitor will block all DC components of the input signal and let all AC components pass through. This can be used to remove a large DC component of the input signal, to be able to measure a small AC component at high resolution.



When measuring DC signals, make sure to set the signal coupling of the input to DC.



Before connecting the Automotive Test Scope ATS5004DW to the computer via USB, the drivers need to be installed.

5.1 Introduction

To operate a Automotive Test Scope ATS5004DW via USB, a driver is required to interface between the measurement software and the instrument. This driver takes care of the low level communication between the computer and the instrument, through USB. When the driver is not installed, or an old, no longer compatible version of the driver is installed, the software will not be able to operate the Automotive Test Scope ATS5004DW properly or even detect it at all.

5.2 Computers running Windows 10

When the Automotive Test Scope ATS5004DW is plugged in into a USB port of the computer, Windows will detect the instrument and will download the required driver from Windows Update. When the download is finished, the driver will be installed automatically.

5.3 Computers running Windows 8 or older

The installation of the USB driver is done in a few steps. Firstly, the driver has to be pre-installed by the driver setup program. This makes sure that all required files are located where Windows can find them. When the instrument is plugged in, Windows will detect new hardware and install the required drivers.

5.3.1 Where to find the driver setup

The driver setup program and measurement software can be found in the download section on TiePie engineering's website. It is recommended to install the latest version of the software and USB driver from the website. This will guarantee the latest features are included.

5.3.2 Executing the installation utility

To start the driver installation, execute the downloaded driver setup program. The driver install utility can be used for a first time installation of a driver on a system and also to update an existing driver.

The screen shots in this description may differ from the ones displayed on your computer, depending on the Windows version.

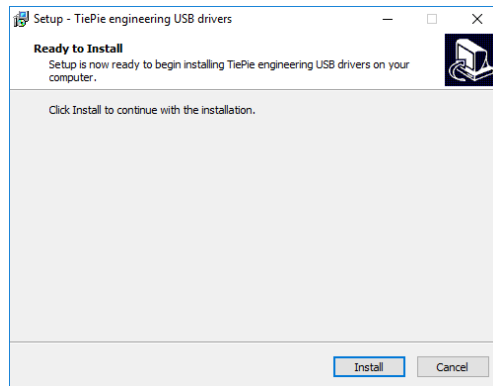


Figure 5.1: Driver install: step 1

When drivers were already installed, the install utility will remove them before installing the new driver. To remove the old driver successfully, **it is essential** that the Automotive Test Scope ATS5004DW is disconnected from the computer prior to starting the driver install utility. When the Automotive Test Scope ATS5004DW is used with an external power supply, this must be disconnected too.

Clicking ***“Install”*** will remove existing drivers and install the new driver. A *remove entry* for the new driver is added to the software applet in the Windows control panel.

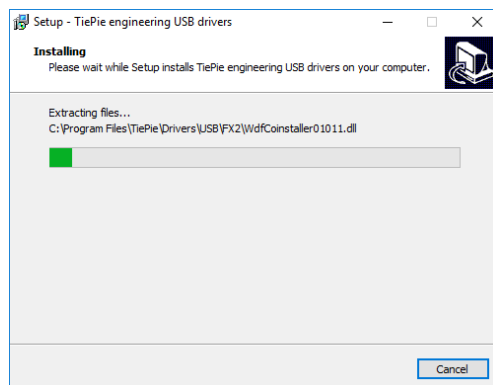


Figure 5.2: Driver install: Copying files

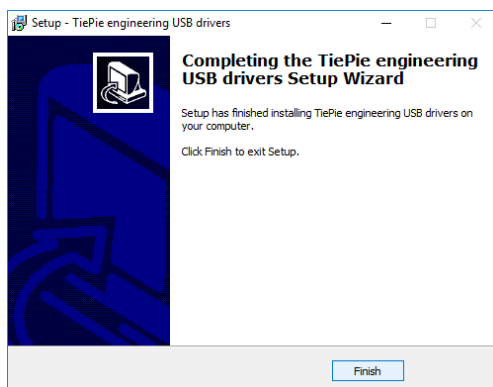


Figure 5.3: Driver install: Finished



Drivers have to be installed before the Automotive Test Scope ATS5004DW is connected to the computer via USB for the first time. See chapter 5 for more information.

6.1 Power the instrument

The Automotive Test Scope ATS5004DW can be powered in three different ways:

- by its built-in battery
- via an external power adapter, connected to the dedicated power input at the rear panel
- via the USB interface

When using the Automotive Test Scope ATS5004DW via its battery, no external power is required. The power consumption of the Automotive Test Scope ATS5004DW depends heavily on the settings of the instrument, when using higher sampling rates the instrument uses more power. Also when using larger record lengths, the power consumption increases. It is therefore not possible to give an exact operating time when running on its battery. When the battery is charged, the **Battery** indicator on the front panel will light up green.

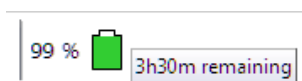


When the battery level becomes low, the **Battery** indicator on the front panel will light up red.



It is recommended to recharge the battery. When the **Battery** indicator starts blinking red, the battery is almost empty and immediate recharging is required.

An indicator in the software will show the battery status and an estimation of the remaining operating time.



6.1.1 Charging the battery

Charging the battery is done by connecting the external power supply or by connecting the USB. When the battery is charging, the **Battery** indicator on the front panel will light up blue.



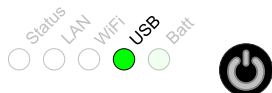
When connected to USB or external power, the battery will only be charged when the USB or external power can deliver enough power to operate the instrument and to charge the battery. When not enough power is available, the battery will be discharged. This is indicated by a blue blinking **Battery** indicator on the front panel of the instrument.

6.1.2 Long term storage

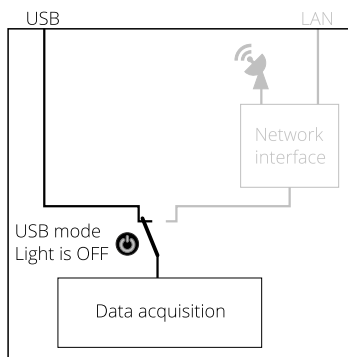
When storing the Automotive Test Scope ATS5004DW for a long time, it is recommended to first charge the battery to approximately 70 %. Do not store the Automotive Test Scope ATS5004DW for a long time with an empty battery or 100 % fully charged battery, as this may reduce battery capacity.

6.2 Instrument operation mode

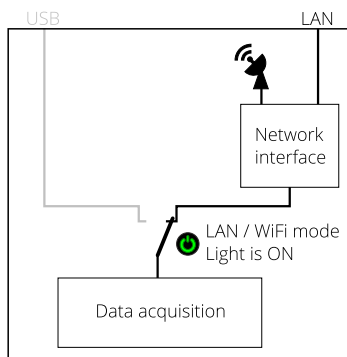
The Automotive Test Scope ATS5004DW has a USB interface and a network interface, used to connect to the instrument via LAN or WiFi. The Power/Mode button at the front panel determines if the Automotive Test Scope ATS5004DW operates as USB instrument or as network (LAN or WiFi) instrument. The light in the Power/Mode button indicates in which mode the Automotive Test Scope ATS5004DW operates. When it is on, the network interface is enabled and the instrument operates as network (LAN or WiFi) instrument. When it is off, the network interface is disabled and the Automotive Test Scope ATS5004DW operates as USB instrument.



Power/Mode button light off: The Automotive Test Scope ATS5004DW can only be used via USB



Power/Mode button light on: The Automotive Test Scope ATS5004DW can only be used via LAN or WIFI



When the network interface of the Automotive Test Scope ATS5004DW is disabled, it will go to a low power state, to save the battery. To enable it again, a short press on the Power/Mode button is required.

When the Automotive Test Scope ATS5004DW is not connected to external power or USB and is not used for two days (network interface disabled), the Automotive Test Scope ATS5004DW switches to "Shipping mode", where the network interface is consuming no power at all. To wake up the Automotive Test Scope ATS5004DW from shipping mode, press the Power/Mode button for 2 seconds. When arriving from the factory, the Automotive Test Scope ATS5004DW will be in shipping mode.

When for some reason the network interface will not disable (the lights remain on), pressing the Power/Mode button for 3 seconds will force the network interface to be disabled.



For network operation, the Automotive Test Scope ATS5004DW uses UDP and TCPIP **port 5450**. Make sure it is open in your fire wall settings.

6.3 Connect via LAN

To use the Automotive Test Scope ATS5004DW via the LAN, connect the Automotive Test Scope ATS5004DW LAN port on the rear panel to the LAN via a network cable.



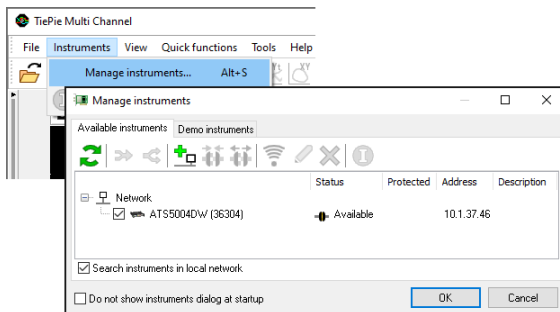
The Automotive Test Scope ATS5004DW network interface must be enabled via the Power/Mode button on the front panel of the instrument. While the network interface is initializing, the Power/Mode button will blink, when the initialization is finished, the Power/Mode button will light up continuously.



When the LAN cable is connected, the LAN interface will attempt to get an address via DHCP. When that is successful, the **LAN** indicator on the front panel of the instrument will light up green.

When after 20 seconds no DHCP is found, the network interface will switch to link-local mode and use a link-local address. The **LAN** indicator on the front panel of the instrument will light up blue to indicate link-local mode. Link-local mode remains active until the LAN cable is removed and the LAN LED goes off. When the LAN cable is then reconnected, getting an address via DHCP is attempted again.

In the Multi Channel software, open the Manage instruments dialog and check **Search instruments in local network**.



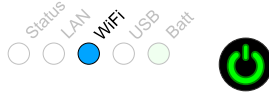
When searching the network is checked, the Automotive Test Scope ATS5004DW will appear. To connect the software to the Automotive Test Scope ATS5004DW check it and close the dialog with the **OK** button.

6.4 Connect via WiFi

There are several different ways to connect the computer to the Automotive Test Scope ATS5004DW via WiFi, depending on whether the computer/laptop has WiFi or not.

6.4.1 The computer/laptop has WiFi

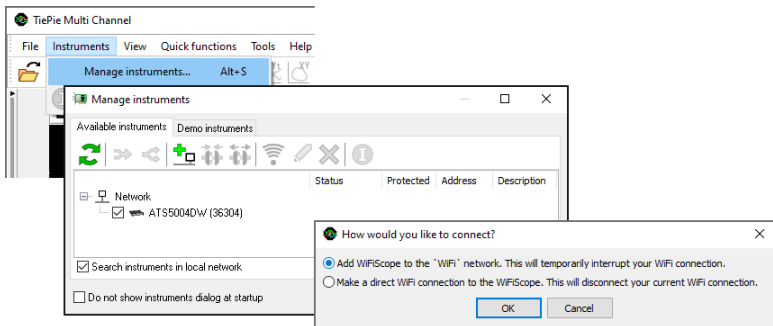
To use the Automotive Test Scope ATS5004DW via WiFi, the network interface must be enabled via the Power/Mode button on the front panel of the instrument. While the network interface is initializing, the Power/Mode button will blink, when the initialization is finished, the Power/Mode button will light continuously.



When the computer does have WiFi, there are two different ways to connect to the instrument via WiFi.

Connect the Automotive Test Scope ATS5004DW to the local WiFi network

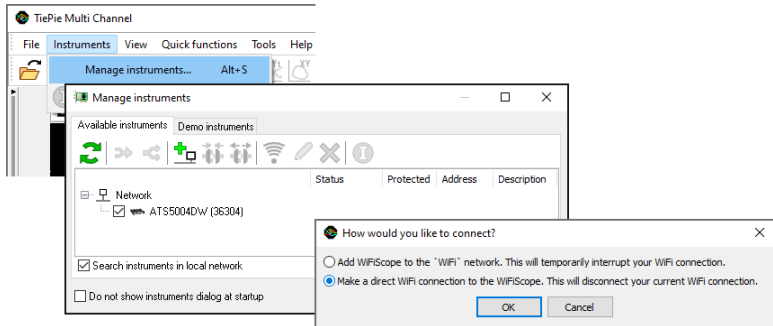
1. In the Multi Channel software open the Manage instruments dialog and check **Search instruments in local network**.
2. Place a check in front of the detected Automotive Test Scope ATS5004DW. It may take a few seconds to discover the instrument.
3. The software will now ask how to connect to the Automotive Test Scope ATS5004DW, select **Add WiFiScope to the 'WiFi' network..**
4. The connection is now set up, if required, the software will ask for the network password. The setup may take up to 30 seconds.



The Automotive Test Scope ATS5004DW is now connected to the local network via WiFi.

Connect to the Automotive Test Scope ATS5004DW directly using WiFi

1. In the Multi Channel software open the Manage instruments dialog and check **Search instruments in local network**.
2. Place a check in front of the detected Automotive Test Scope ATS5004DW. It may take a few seconds to discover the instrument.
3. If the computer is currently connected to a WiFi network, the software will ask how to connect to the Automotive Test Scope ATS5004DW, select **Make a direct WiFi connection to the WiFiScope..**
4. The connection is now set up. The setup may take up to 30 seconds.



The Automotive Test Scope ATS5004DW is now setup as Access Point, to create its own WiFi network. The computer is disconnected from the local WiFi network and connected to the Automotive Test Scope ATS5004DW WiFi network. The computer will now no longer have internet access and/or access to network locations.

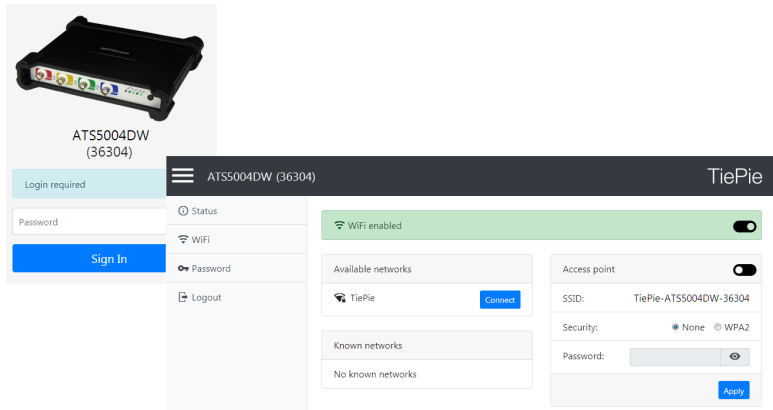
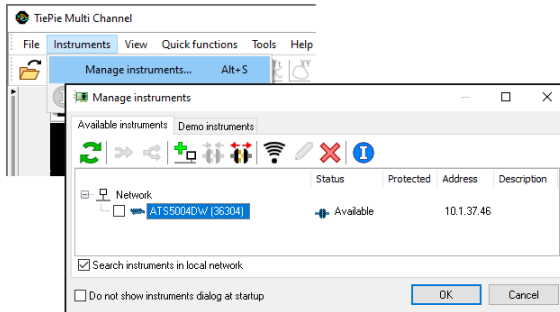
6.4.2 The computer/laptop has NO WiFi

When the computer has no WiFi, the Automotive Test Scope ATS5004DW will have to be connected to the local network. Therefore, the network interface of the Automotive Test Scope ATS5004DW must be enabled via the Power/Mode button on the front panel of the instrument. While the network interface is initializing, the Power/Mode button will blink, when the initialization is finished, the Power/Mode button will light continuously.



1. Connect the Automotive Test Scope ATS5004DW via a cable to the LAN as shown in the section **Connect via LAN**.
2. In the Multi Channel software open the Manage instruments dialog and check **Search instruments in local network**.
3. Place a check in front of the detected Automotive Test Scope ATS5004DW. It may take a few seconds to discover the instrument.

4. Click the WiFi button in the instruments manager to open the Automotive Test Scope ATS5004DW web interface.
5. Login to the web interface (default password = **tiepie**).
6. In the web interface, connect to the WiFi network using the **connect** button (and enter its password if required)
7. When successfully connected, close the web interface and disconnect the LAN cable.
8. The Multi Channel software will now detect the Automotive Test Scope ATS5004DW via WiFi, this may take a few seconds.

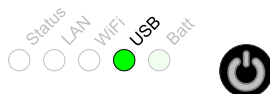


6.5 Connect via USB

To use the Automotive Test Scope ATS5004DW via USB, connect the Automotive Test Scope ATS5004DW USB port on the rear panel to the computer via a USB cable.



When using the instrument via USB, the network interface must be disabled via the Power/Mode button on the front panel of the instrument.



When a USB connection is established, this is indicated by a green lit **USB** indicator on the front panel of the instrument.

The software can now connect to the Automotive Test Scope ATS5004DW as local instrument.

6.5.1 Plug into a different USB port

When the Automotive Test Scope ATS5004DW is plugged into a different USB port, some Windows versions will treat the ATS5004DW as different hardware and will install the drivers again for that port. This is controlled by Microsoft Windows and is not caused by TiePie engineering.

7.1 Ground compensation cable

The Automotive Test Scope ATS5004DW is delivered with a special ground compensation cable, together with three corresponding ground clips in different sizes.



Figure 7.1: Ground compensation

The 1.5 m long ground compensation cable has a 2 mm banana plug at one end, that plugs into the small banana socket at the rear of the Automotive Test Scope ATS5004DW.



Figure 7.2: Rear ground connection

The other end has a 4 mm banana plug that connects to an alligator clip that can be connected to the ground of the test subject.

7.2 When using the the ground compensation cable

The ground compensation cable between Automotive Test Scope ATS5004DW and test subject is required when the Automotive Test Scope ATS5004DW is con-

nected to the mains adapter and/or the USB cable, and the test subject is not grounded.

7.3 When is the ground compensation not required

The ground compensation cable between Automotive Test Scope ATS5004DW and test subject is not required when:

- When the Automotive Test Scope ATS5004DW operates on battery power only
- When the input range of the Automotive Test Scope ATS5004DW is set to 20 V or higher

7.4 Why ground compensation?

Mains power supplies usually have noise filtering capacitors between the mains input and the output. When a device is powered by such power supply and it is not grounded, the device will float relative to the ground. This floating voltage can get as high as the mains voltage. This is however not dangerous because the current that can flow is very small.

When measuring with a Automotive Test Scope ATS5004DW, this floating voltage can affect your measurements because of the high input impedance of the Automotive Test Scope ATS5004DW, which is 1 MOhm.

When the Automotive Test Scope ATS5004DW is only battery powered, your measurements will not be affected, because the Automotive Test Scope ATS5004DW will also float on the floating voltage of the test subject.

When the Automotive Test Scope ATS5004DW is connected to the USB or connected to the mains, the floating voltage will cause a high common mode voltage at the input of the Automotive Test Scope ATS5004DW. The inputs of the Automotive Test Scope ATS5004DW will then clip and you will get strange measurement readings.

The common mode range of the Automotive Test Scope ATS5004DW is 2 V (input range 200 mV to 800 mV), 20 V (input range 2 V to 8 V) or 200 V (input range 20V to 80V). So if you measure in the 200mV range and the floating voltage becomes greater than 2 V, the input channel of the Automotive Test Scope ATS5004DW will clip and you will measure strange readings. If you measure in the 20 V range (or higher) you will suffer much less from the floating voltage because these are usually smaller than 200 V.

When the Automotive Test Scope ATS5004DW ground is connected to the ground of the test subject, they will both get the same ground level, so there will be no (high) common mode voltage due to floating. You will get no measurement errors then.

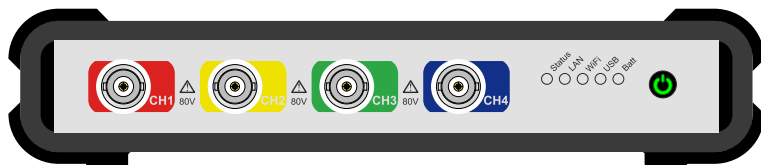


Figure 8.1: Front panel

8.1 Channel input connectors

The CH1 – CH4 Isolated BNC connectors are the main inputs of the acquisition system. The isolated BNC connectors are not connected to the ground of the Automotive Test Scope ATS5004DW.

8.2 Power/Mode button

The **Power/Mode** button is situated at the right of the front of the instrument. It is used to switch the mode of the Automotive Test Scope ATS5004DW between USB use and LAN or WiFi use. To use the Automotive Test Scope ATS5004DW via LAN or WiFi, the network interface must be enabled, by pressing the Power/Mode button. During initializing the network interface, the Power/Mode button will blink green. When initialization is finished, the indicator in the button will be lit continuously green.

When using the Automotive Test Scope ATS5004DW via USB, the network interface must be disabled, by pressing the Power/Mode button again. The light in the button will go off.

8.3 Status indicators

The Automotive Test Scope ATS5004DW has a number of status indicators, which can be lit to indicate the status of the instrument.

8.3.1 Status

The status light indicates whether the Automotive Test Scope ATS5004DW is being used by software or is not in use.

- When lit continuously green, the Automotive Test Scope ATS5004DW is not being used, it is available to be opened in software.
- When lit continuously blue, the Automotive Test Scope ATS5004DW is in use, it is already opened in software.

8.3.2 LAN

When the **LAN** indicator is lit, the Automotive Test Scope ATS5004DW is connected to a wired network.

- When lit continuously green, the Automotive Test Scope ATS5004DW has received a network address via DHCP.
- When lit continuously blue, the Automotive Test Scope ATS5004DW is assigned a link local address.

8.3.3 WiFi

When the **WiFi** indicator is lit, the Automotive Test Scope ATS5004DW is connected to the computer and measuring via a WiFi network. The color indicates how the instrument operates:

- When blinking green, the Automotive Test Scope ATS5004DW is trying to establish a WiFi connection to an existing network.
- When lit continuously green, the Automotive Test Scope ATS5004DW has established a connection to an existing WiFi network and has received a network address via DHCP.
- When lit continuously blue, the Automotive Test Scope ATS5004DW acts as WiFi access point. Connect the computer via WiFi to the network that the Automotive Test Scope ATS5004DW creates.
- When lit continuously red, WiFi of the Automotive Test Scope ATS5004DW is disabled in the instrument's web interface.

8.3.4 USB

When the **USB** indicator is green, the Automotive Test Scope ATS5004DW is connected to the computer and measuring via USB.

8.3.5 Batt

The **Batt** indicator can indicate various different states:

- When lit continuously green, the battery is full, while the external power is still connected. When external power is not connected, the battery is being discharged, its level is higher than 5 %.
- When lit continuously blue, the battery is charging.
- When blinking blue, external power or USB power is connected, but cannot deliver enough power to charge the battery.
- When lit continuously red, the battery level is below 5 %, charging is recommended.
- When blinking red, the battery level is below 2 %, immediate charging is required.

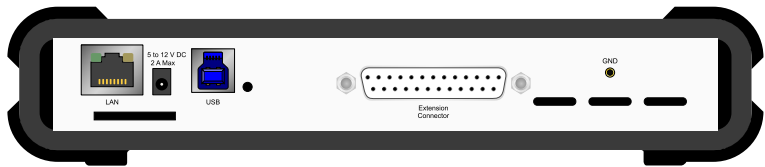


Figure 9.1: Rear panel

9.1 Power

The Automotive Test Scope AT55004DW can be powered by its internal battery, via a dedicated power input at the rear panel and via the USB interface.

To charge the battery, connect the external power supply. The battery can also be charged via the USB, but only if the USB can deliver enough power to operate the instrument and charge the battery. If not enough power for both is available, the battery will not be charged, but will be used by the instrument and be discharged.

The specifications of the dedicated power connector are:



Pin	Dimension	Description
Center pin	Ø1.3 mm	positive
Outside bushing	Ø3.5 mm	ground

Figure 9.2: Power connector

The following minimum and maximum voltages apply to the power inputs:

Minimum	5 V _{DC} / 2 A
Maximum	12 V _{DC} / 2 A

Table 9.1: Maximum voltages

9.1.1 Power adapter

The Automotive Test Scope ATS5004DW comes with an external 12 V_{DC} 2 A power adapter that can be connected to any mains power net that supplies 100 – 240 V_{AC}, 50 – 60 Hz. The external power adapter can be connected to the dedicated power connector.



Figure 9.3: Power adapter

9.2 USB

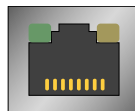


USB

Figure 9.4: USB connector

The Automotive Test Scope ATS5004DW is equipped with a USB 3.0 Super speed (5 Gbit/s) interface with a USB 3 type B Super speed socket. It will also work on a computer with a USB 2.0 interface, but will then operate at 480 Mbit/s.

9.3 LAN



LAN

Figure 9.5: LAN connector

The Automotive Test Scope ATS5004DW is equipped with a 1 Gbit LAN interface with RJ45 socket.

9.4 Extension Connector

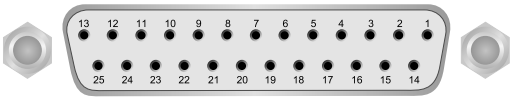


Figure 9.6: Extension connector

To connect to the Automotive Test Scope ATS5004DW a 25 pin female D-sub connector is available, containing the following signals:

Pin	Description	Pin	Description	Pin	Description
1	Ground	10	Ground	19	Reserved
2	Reserved	11	Trigger out (TTL)	20	Reserved
3	External Power in DC	12	Reserved	21	Reserved
4	Ground	13	Ext. sampling clock out (TTL)	22	Ground
5	+5V out, 10 mA max.	14	Ground	23	I ² C SDA
6	Ext. sampling clock in (TTL)	15	Ground	24	I ² C SCL
7	Ground	16	Reserved	25	Ground
8	Ext. trigger in (TTL)	17	Ground		
9	Data OK out (TTL)	18	Reserved		

Table 9.2: Pin description Extension connector

All TTL signals are 3.3 V TTL signals which are 5 V tolerant, so they can be connected to 5 V TTL systems.

Pins 9, 11, 12, 13 are open collector outputs. Connect a pull-up resistor of 1 kOhm to pin 5 when using one of these signals.

9.5 Ground connector

The Automotive Test Scope ATS5004DW has a special 2 mm banana ground connector, to connect a ground compensation lead.



Figure 9.7: Ground connector

For a description on how to use the Ground connector and ground compensation lead, see chapter 7.

9.6 Factory reset

Right next to the LAN connector a reset button is located to perform a factory reset on the Automotive Test Scope ATS5004DW. The factory reset clears all user settings like wifi networks and login codes. To perform a factory reset, perform the following steps:

- If the Power/Mode button on the front is lit, press it to switch it off.
- Press the reset button on the rear and keep it pressed.
- While keeping the reset button pressed, press the Power/Mode button on the front again, its light will start blinking.
- Keep the reset button pressed until the Power/Mode button starts to light continuously, then release the reset button. This may take up to 20 seconds.

The instrument is now back in factory state as when it left the factory. It is ready to be used again in the same way as indicated in chapter 6.2.

9.7 Ventilation slots

Below the LAN connector and power connector a ventilation slot is located, with a fan behind it. And below the ground connector three smaller ventilation slots are located.

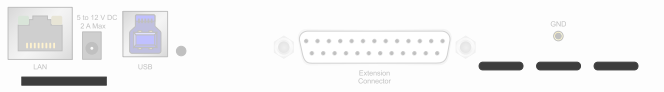


Figure 9.8: Ventilation slots



Do not block the ventilation slots as this may cause the Automotive Test Scope ATS5004DW becoming too hot.
Do not insert objects in the ventilation slot as this may damage the fan.

The network module of the Automotive Test Scope ATS5004DW has internal firmware, that determines its capabilities, when the Automotive Test Scope ATS5004DW is connected via LAN or WiFi. This firmware can be updated to add new functionality. This chapter describes the steps to update the firmware of the Automotive Test Scope ATS5004DW.

10.1 Preparation



Updating the firmware will clear all entered WiFi network logins.

First make sure that the firmware update image file is obtained and stored on a readily available location on the computer.

To update the firmware, a USB connection between the computer and the Automotive Test Scope ATS5004DW is required, make sure that the USB cable for the Automotive Test Scope ATS5004DW is available. Plug the USB cable in a free USB port of the computer, but do **not** connect it to the Automotive Test Scope ATS5004DW yet.

- Start the latest version of the Multi Channel software, available from the website.
- In the Multi Channel software, open the **Manage instruments** window, via the **Instruments** menu or hotkey **Alt + S**
- Disconnect the Automotive Test Scope ATS5004DW from external power and, when used, from the wired LAN.
- Switch the Power/Mode button **off**. All indicators on the front panel of the Automotive Test Scope ATS5004DW are now off.



10.2 Switching to firmware update mode

- Press the Power/Mode button and keep it pressed.
- When the battery indicator lights up, plug the USB cable in the instrument. The USB light will now turn blue.

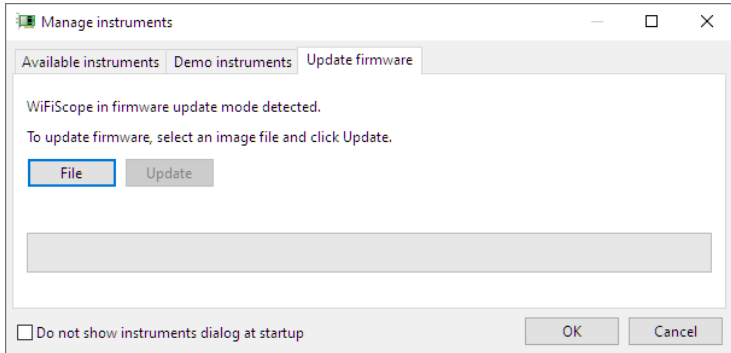


- Now release the Power/Mode button. All lights now turn blue. The Automotive Test Scope ATS5004DW is now in firmware update mode.

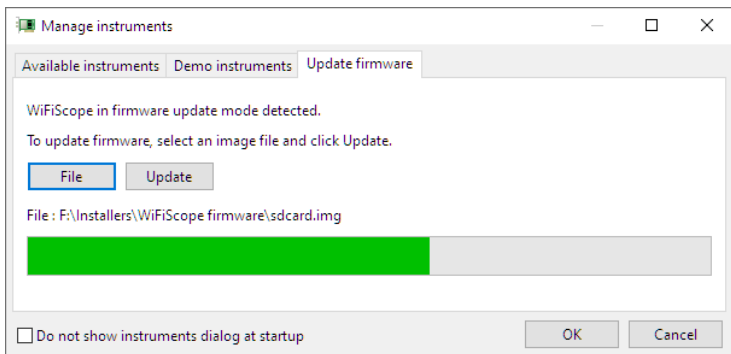


10.3 Updating the firmware

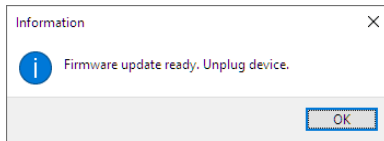
The **Manage instruments** window now has an additional tab **Update firmware**, switch to that tab page.



Click the **"File"** button and in the File open dialog, browse to the location of the firmware image file and select the image file. The **"Update"** button is now enabled, click it to start the firmware update process.



A progress bar will show the status of the update. The update process will take approximately 1 minute. When the update is ready, a notification will be shown.

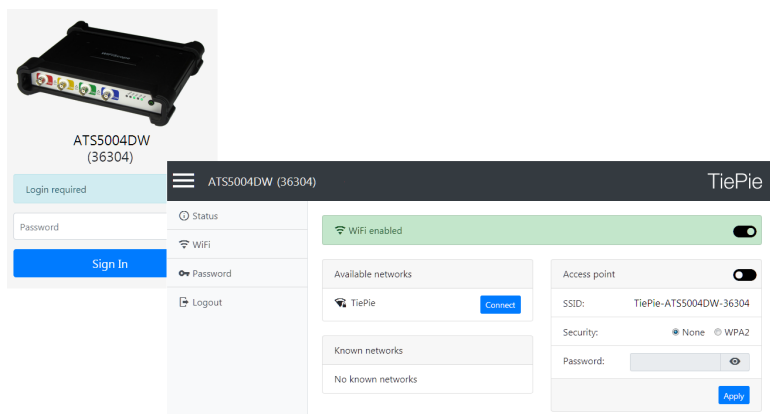
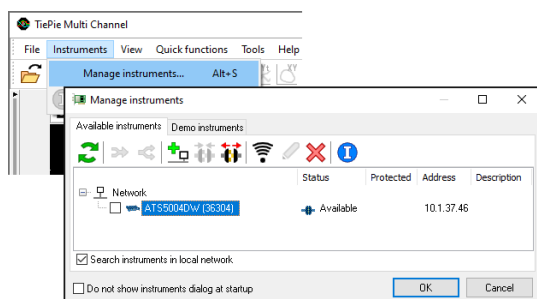


Now unplug the instrument from the USB. The Automotive Test Scope AT55004DW can now be used via LAN and WiFi again.

The Automotive Test Scope ATS5004DW has a web interface in which status information of the instrument can be found and in which WiFi network settings can be changed.

11.1 Enter the web interface

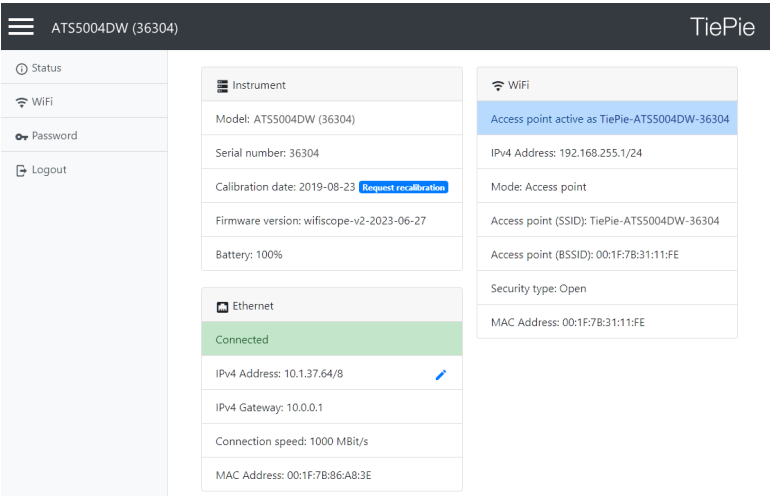
1. Connect the Automotive Test Scope ATS5004DW via a cable to the LAN.
2. In the Multi Channel software open the Manage instruments dialog and check **Search instruments in local network**.
3. Place a check in front of the detected Automotive Test Scope ATS5004DW. It may take a few seconds to discover the instrument.
4. Click the WiFi button in the instruments manager to open the Automotive Test Scope ATS5004DW web interface.
5. Login to the web interface (default password = **tiepie**).



11.2 Setting a fixed IP address

By default, the Automotive Test Scope ATS5004DW is setup to receive an IP address by the DHCP server in the local network. When the Automotive Test Scope ATS5004DW is connected via wired LAN, it is possible to set a fixed IP address, for the instrument to use.

The settings for a fixed IP address are found on the **Status** page in the web interface.



Clicking the edit button (pen symbol) behind the IPv4 address opens the IPv4 address edit page.

By default, the **Method** is set to **Automatic (DHCP)**, where the DHCP server in the network assigns an IP address to the Automotive Test Scope ATS5004DW.

When the **Method** is set to **Manual**, the following settings can be defined manually, to your preferences:

- IP address
- Subnet mask
- Gateway
- DNS server

When the Automotive Test Scope ATS5004DW is connected via WiFi, it is not possible to set a fixed IP address.

12.1 Acquisition system

Number of input channels	4 analog		
CH1, CH2, CH3, CH4	isolated BNC, female		
Type	Differential		
Resolution	12, 14, 16 bit user selectable		
Accuracy	0.3% of full scale \pm 1 LSB		
Ranges (full scale)	\pm 200 mV \pm 2 V \pm 20 V	\pm 400 mV \pm 4 V \pm 40 V	\pm 800 mV \pm 8 V \pm 80 V
Coupling	AC/DC		
Impedance	2 M Ω / 40 pF		
Maximum voltage	200 V (DC + AC peak <10 kHz)		
Maximum common mode voltage			
200 mV to 800 mV ranges	2 V		
2 V to 8 V ranges	20 V		
20 V to 80 V ranges	200 V		
Common Mode Rejection Ratio	-48 dB		
Channel Isolation	500 V		
Channel Separation	-80 dB		
Bandwidth (-3dB)	50 MHz		
AC coupling cut off freq. (-3dB)	\pm 1.5 Hz		
SureConnect			
Maximum voltage on connection	200 V (DC + AC peak <10 kHz)		
Resistance measurement			
Ranges	100 Ω 1 k Ω 10 k Ω 100 k Ω 1 M Ω	200 Ω 2 k Ω 20 k Ω 200 k Ω	
Accuracy	1%		
	12 bit	14 bit	16 bit
Maximum sampling rate	50 MSa/s	3.125 MSa/s	195.3 kSa/s
Maximum streaming rate	500 kSa/s	480.8 kSa/s	195.3 kSa/s
Sampling source	internal quartz, external		
Internal	Quartz		
Accuracy	\pm 0.01%		
Stability	\pm 100 ppm over -40°C to +85°C		
External	On extension connector		
Voltage	3.3 V TTL, 5 V TTL tolerant		
Frequency range	100 MHz \pm 5 %		
Memory	128 kSamples per channel		

12.2 Trigger system

System	digital, 2 levels
Source	CH1, CH2, CH3, CH4, digital external, OR
Trigger modes	rising slope, falling slope, inside window, outside window
Level adjustment	0 to 100% of full scale
Hysteresis adjustment	0 to 100% of full scale
Resolution	0.024 % (12 bits)
Pre trigger	0 to selected record length, 1 sample resolution
Post trigger	0 to selected record length, 1 sample resolution
Trigger hold-off	0 to 1 MSamples, 1 sample resolution
Digital external trigger	
Input	extension connector
Range	0 to 5 V (TTL)
Coupling	DC

12.3 Physical

Height	44 mm / 1.7"
Length	187 mm / 7.4"
Width	215 mm / 8.5"
Weight	751 g / 26.5 ounce
USB cord length	1.5 m / 59"

12.4 Power

Power	From USB, external input or built-in battery
Consumption	12 V _{DC} , 2 A max
Internal battery	Li-ion
Capacity	7000 mAh, 3.7 V
Operating time	Strongly depending on instrument setup, ≥ 3 hours
Power adapter	External
Input	110 to 240 V _{AC} , 50 to 60 Hz, 500 mA
Output	12 V _{DC} , 2 A
Dimension	
Height	57 mm / 2.2"
Width	30 mm / 1.2"
Length	88 mm / 3.4"
Cable length	1.8 m / 70"
Order number	TP-UES24LCP-120200SPA
Replaceable mains plugs for	EU, US, AU, UK

12.5 I/O connectors

CH1, CH2, CH3, CH4	Isolated female BNC
USB	USB3 type B Super Speed socket
LAN	RJ45 socket
Extension connector	D-sub 25 pins female
Power	3.5 mm power socket
Ground connection	2 mm banana socket

12.6 Interface

USB	USB 2.0 HighSpeed (480 Mbit/s) (USB 3.0 compatible)
Network	
LAN	1 Gbps
WiFi	802.11
Network port (TCP/IP and UDP)	5450 (IANA assigned)

12.7 System requirements

PC I/O connection	USB 2.0 or newer
Operating System	Windows 10, 32 and 64 bits

12.8 Environmental conditions

Operating	
Ambient temperature	20 °C to 25 °C for rated accuracy 10 °C to 40 °C without specifications
Relative humidity	10 to 90% non condensing
Charging	
Ambient temperature	0 °C to 35 °C
Relative humidity	10 to 90% non condensing
Storage	
Ambient temperature	0 °C to 35 °C
Relative humidity	5 to 95% non condensing

12.9 Certifications and Compliances

CE mark compliance	Yes
RoHS	Yes
REACH	Yes
EN 55011:2016/A1:2017	Yes
EN 55022:2011/C1:2011	Yes
IEC 61000-6-1:2019 EN	Yes
IEC 61000-6-3:2007/A1:2011/C11:2012	Yes
ICES-001:2004	Yes
AS/NZS CISPR 11:2011	Yes
IEC 61010-1:2010/A1:2019	Yes
UL 61010-1, Edition 3	Yes

12.10 Differential attenuators

Model	TP-DA10
Attenuation	10 x, differential
Bandwidth	25 MHz
Input impedance	10 M Ω // 15 pF
Maximum input voltage	300 V
Input connector	Female BNC
Output connector	Male BNC
Dimensions	
Length	79 mm
Diameter	19 mm
Weight	30 g
Suitable instrument	Automotive Test Scope ATS5004DW

12.11 Measure leads

Model	TP-C1812B
Type	differential
Connectors	
Instrument side	isolated male BNC connector
Test point side	red and black 4 mm shrouded banana plugs
Bandwidth	4 MHz
Safety	CAT III, 1000 V, double isolated
Dimensions	
Total length	3000 mm
Length to split	1800 mm
Length individual ends	1200 mm
Weight	80 g
Color	black
Heat resistant	yes
Certification and compliances	
CE conformity	yes
RoHS	yes
Accessories	
Color coding rings	5 x 3 rings, various colors
Suitable instrument	Automotive Test Scope ATS5004DW

12.12 Package contents

Instrument	Automotive Test Scope ATS5004DW
Test lead	4 x TP-C1812B low noise differential test leads with 4 mm banana plugs
Attenuator	4 x TP-DA10 differential attenuator X10
Accessories	Ground compensation cable TP-GCC150 with 3 alligator clips External power adapter network cable USB cable
Software	Windows 10, 32 and 64 bits, via website
Drivers	Windows 10, 32 and 64 bits, via website
Software Development Kit	Windows 10 and Linux, via website
Manual	Quick Start Guide, Instrument manual and software manual

12.13 Warranty

TiePie engineering instruments are designed, manufactured and tested to provide high reliability. In the unlikely event you experience difficulties, the TiePie engineering instruments are fully warranted for two years.	
This warranty includes	All parts and labor (excluding probes and/or measure leads and/or batteries) Warranty on batteries is 6 months. No charge for return shipping Long-term 7 year support Upgrade to the latest software at no charge
Optionally available	Extension to five year warranty, option W5

If you have any suggestions and/or remarks regarding this manual, please contact:

TiePie engineering
Koperslagersstraat 37
8601 WL SNEEK
The Netherlands

Tel.: +31 515 415 416
Fax: +31 515 418 819
E-mail: support@tiepie.nl
Site: www.tiepie.com



